

Be inspired and find your perfect course



Questions we are often asked

Who comes to the Open Learning Programme?

Anyone over the age of 18 – there is no upper age limit.

Students who want to learn something new – from local history, to creative writing, languages to literature. We offer a great range and breadth of courses.

Students who want to learn a subject to enhance their current employment.

I am retired - unemployed - working - busy during the week. What can you offer me?

We have a time to suit everyone - we offer a range of courses during the day, evening and at weekends.

I am nervous about re-entering education. Are the classes very formal or academic and do I need qualifications to take them?

Don't be nervous – our courses are delivered in an informal and relaxed manner.

Students do not need to have previous experience or qualifications.

With the many coffee shops in the surrounding area, you can get to know other people over a coffee, a cup of tea or lunch.

I am an International Student, new to Belfast. Are there courses for me?

Yes, come along to meet new people and learn something fun. Everyone is very friendly and welcoming.



**We have a new online enrolment system
which we hope you will find
even easier to use.**



**Two ways to access the
Open Learning website.**
Either type in **www.qub.ac.uk/ol**
or scan the
QR code above.



School of Social Sciences, Education and Social Work

Open Learning

Autumn/New Year Programme 2025/2026

The Bridget Sarah Hurson Memorial Bursary

The bursary is established in the memory of Bridget Sarah Hurson, late mother of Professor Emeritus Tess Maginess and Ms Edna Gibson. Bursaries, up to the value of £200 each, will be awarded this academic year to students facing financial hardship who wish to enrol in any Open Learning course.

Individual applicants should make a written submission of no more than 300 words detailing how the award would enable them to participate in an Open Learning Programme. The closing date of applications is **Friday 5 September 2025**. The award will be made in two instalments. A sum equal to the amount of the fees payable will be paid at the beginning of the course; the balance will be paid at the end of the course and will be

dependent on the recipient attending 70% of classes.

Applications should be sent to the Open Learning Office, School of Social Sciences, Education and Social Work, Queen's University, 20 College Green, Belfast BT7 1LN or by email:

openlearning.education@qub.ac.uk

and will be considered by a panel drawn from the School and the family.



School of Social Sciences, Education and Social Work

Open Learning

Autumn/New Year Programme 2025/2026

Important

Queen's University Belfast has made all reasonable efforts to ensure that this programme is accurate and up-to-date when compiled, but can accept no responsibility for any errors or omissions. The University reserves the right to cancel classes and to substitute tutors teaching certain classes if necessary. Students are responsible for ensuring that the fees for their course are met. Entry to courses will be restricted by number of entrants.

The programme is available in alternative formats, on request.

All enquiries to:

Open Learning
School of Social Sciences, Education
and Social Work
Queen's University Belfast
20 College Green
Belfast BT7 1LN
Northern Ireland

Tel: **(028) 9097 3323**

Email: openlearning.education@qub.ac.uk

Web: www.qub.ac.uk/ol

Follow us on Facebook:

Facebook.com/QUBOpenLearning

Staff

If you have any questions about our classes and courses, staff can be contacted by email during normal office hours: Monday – Friday 9.00 am – 4.30 pm.

The Open Learning Course Director can be contacted, initially in writing, at the above address.

Course Directors, Open Learning Programme

Prof Katy Hayward

Dr Cathal McManus

Administration Officers

Martina Carey

Chris McWatters

Term Dates

Autumn 2025:

Monday 22 September to
Friday 28 November

New Year 2026:

Monday 19 January to Friday 27 March

(The University is closed on Tuesday
17 March for St Patrick's Day)



Contents

Welcome to Open Learning 8

What do I need to know? 9

Venues for Courses 10

Facilities and Support for Disabled Students 10

Course Availability – Key:

■ Autumn Course 2025

■ New Year Course 2026

Creative Writing 11

■ Beat the Blank Page

■ Creative Writing in Genre Fiction

■ How to Write for Profit and Pleasure

■ Life Writing: What is My Story?

■ Starting to Write

■ Tell Your Story: Writing and Publishing Life Writing/Memoir

■ Writing Short Stories

Cultural Studies 15

■ Ekphrasis: Poetry Inspired by Art

■ We're Not Just Pottering Around: Arts, Crafts and "Women's Work"

Digital Photography 16

■ Basic and Creative Photography

■ Creative Photography

■ Photoshop for the Beginner

Education and Training 17

■ Boost Your Reading Brain

■ Critical Thinking

■ Teaching English to Migrants, Refugees and Asylum Seekers

■ The Intercultural School: Working with Newcomer Pupils and Traveller Students in Schools: Post Primary Schools, Part 1

■ The Intercultural School: Working with Newcomer Pupils and Traveller Students in Schools: Post Primary Schools, Part 1

■ The Intercultural School: Working with Newcomer Pupils in Schools: Primary Schools, Part 2

■ The Intercultural School: Working with Newcomer Pupils in Schools: Post Primary Schools, Part 2

■ Understanding Refugee and Asylum Systems - a Beginner's Workshop

■ Understanding UK Asylum systems: An Advanced Workshop

Environment and Archaeology 21

■ Affecting Ecological and Environmental Change

■ Easy Bird Watching for Beginners

■ How Plants Work

■ Native Trees: Their Identification and Place in Society

■ Rewilding: Breathing New Life into Conservation

■ The CAPNI Introduction to the Practice of Archaeology in Ireland. An illustrated Lecture Series

■ Woodland: A Hidden Wealth of Wildlife

First Aid 25

■ Practical First Aid

History and Politics 25

■ A Deadly Rivalry: A History of Franco-German Conflict and Eventual Partnership

■ A History of Modern Britain, Part 8: Early Victorian Britain, 1837-1857

■ A History of the USA, Part 7: The Progressive Era, 1900-1920

■ Belfast's Slavery Past, 1613-1866



- “Big House” in Ireland – North and South
- Builders of West Belfast, Part 1: A Walking Tour
- Builders of Central Belfast: A Walking Tour
- Call the Midwife! A Brief History of Pregnancy and Childbirth
- Crowns, Coups and Courage: The Tudor Queens of England
- “Gott Strafe England”
- History of India 1: The Indus Valley to the Moghul Empire
- Introduction to the Archaeology of Greece
- Israel/Palestine and The Middle East
- Love in the Time of Jane Austen
- Napoleon
- Plagues and Pox: Medicine and Society in Early Modern Britain and Ireland
- Richard Nixon: A Life in Politics
- The Russian-Ukrainian Conflict in Context
- Technowar
- Ten Radical Belfast Women
- The Fight for the Falklands
- The Medieval Church
- The Norman Invasion of Ireland
- The Second World War, Year by Year - 1941: Annihilation
- The Social History of Belfast and its Residents, 1798 to 1914
- The Tories: The Conservative Party in the Twentieth Century
- Thomas Becket: Turbulent Priest
- Ulster in the Nineteenth Century

Languages

41

- French Beginners' (10 weeks)
- French: False Beginners'/Upper Beginners'
- French: Lower Intermediate (10 weeks)
- French: Lower Intermediate/Intermediate
- French Conversation Club (Intermediate),
- French: Conversation Club, Intermediate to Advanced
- French: Upper Intermediate
- French: Perfect Grammar
- French: Perfect Pronunciation
- French: The French Club (monthly)
- ■ German: Beginners'
- German: Lower Intermediate
- German: Intermediate
- German: Language Club, Intermediate
- German: Language Club, Advanced
- Classical Greek: Language Club
- Irish: Beginners'
- Irish: Advanced Irish Conversation
- Italian: Refresher Course for Post-Beginners
- ■ Italian: Beginners'
- Italian: Lower Intermediate
- Italian: Fables to Rewrite, Lower Intermediate/Intermediate/Upper Intermediate
- Italian: Five Lesser-Known Venetian Islands, Lower Intermediate/Intermediate/Upper Intermediate
- Italian: Vocabulary Accelerator
- Italian: Intermediate



- Italian: Upper Intermediate
- Italian: Language Club
- ■ Spanish: Beginners'
- Spanish: Lower Intermediate
- Spanish: A Taste of Spain, Intermediate
- Spanish: Intermediate
- Spanish: Upper Intermediate
- Spanish: Upper Intermediate Conversation
- Spanish: Grammar Clinic

Law 57

- ■ A Brief History of the Law: The Interesting Bits

Literature 57

- Contemporary American Novel
- Donne and Herbert - Poet Priests
- Forrest Reid: 'The Proust of Ormiston Crescent'
- Inside the Walls: Big Houses Literature
- ■ The Blackbird Bookclub
- The Golden Age of Russian Literature
- World Literature: Global Voices
- ■ Writing Women: A Journey through Contemporary Women's Fiction

Media Studies and Drama 64

- Playing Shakespeare: *The Merchant of Venice*
- Playing Shakespeare: *Troilus and Cressida*

Music 65

- Camille Saint-Saens, The Man who Composed 'The Carnival of Animals'
- Mornings with Papa Haydn

Personal Development and Communications 66

- Basic Psychology: Theory, Research and Application
- Compassionate Listening
- Creative Thinking Skills
- ■ Daoyin: Chinese Health Exercises
- Developing Resilience through the Arts
- Developmental Psychology: From Infancy to Adolescence
- ■ Making Sense of Healthy Eating: A New Paradigm
- Manifesting: Science or Wishful Thinking?
- ■ Mindfulness-Based Stress Reduction

Personal Finance 70

- Understanding the Stockmarket: An Introduction

Science 71

- Our Place in the Universe

Visual Arts 71

- Caravaggio: Brushes with the Law
- Leonardo da Vinci: Renaissance Man

Classes Outside Belfast 72

- Hollywood: Israel/Palestine and the Middle East
- Hollywood: Big House, Wee House in Irish Literature

One-Day Courses 74



Welcome to Open Learning

Welcome to this latest Open Learning Programme of short courses. We would like to begin by thanking the thousands of faithful learners that return to us each year, and to warmly welcome new participants.

Queen's University has a long proud history of providing educational opportunities to the community it serves, dating back to the 1850s. In Open Learning we are proud to have inherited this lifelong learning tradition.

Through Open Learning we aim to provide educational opportunities, irrespective of age or academic qualifications, to the whole community of Northern Ireland, whether it is for career development, personal growth or simply to satisfy a curiosity or love for learning.

This year students are being offered the opportunity to 'dig' deeper into our history as we are offering two archaeology-based courses. Aikaterini (Katerina) Kolotourou's short course on an Introduction to the Archaeology of Greece (p. 31) will introduce students to the archaeology, culture, and society of the Greek world from the Late Bronze Age (c. 1600-1125 BC) through to the Hellenistic period and the aftermath of Alexander the Great's empire (c. 323-31 BC).

Meanwhile, archaeologists from the Centre for Community Archaeology at QUB, as part of the Community Archaeology Project Northern Ireland (CAPNI), will deliver a series of illustrated talks on the practice of archaeology in Ireland (p 24). Amongst other things, students will cover topics such as ancient DNA; artefacts; vernacular architecture and buildings archaeology. What is more, the talks will be delivered in a hybrid

format, allowing students to attend either in person or remotely.

And, as ever, we have a great selection of language courses, pitched at every level from beginners through to advanced.

Some may notice a glaring omission from the Programme this year; our Senior Administrator, Wendy Hunter. After many years (she refused to confirm the exact figure) working with Open Learning, and some of its previous guises, Wendy decided to retire at the end of July. We want to sincerely thank Wendy for all she has done to develop the Programme over the years and to wish her the very best with her retirement. We hope, of course, that she will not become a stranger and that she delivers on her promise to return as a student!

All of our courses are student-centred and delivered in a manner that ensures they are interesting, academically challenging, but also, above all else, enjoyable. Combined with the beautiful surroundings of Queen's University and the relaxed and informal learning environment, you are sure to find a very warm welcome.

Professor Katy Hayward
Dr Cathal McManus

Course Directors, Open Learning



What Do I Need To Know?



Two ways to access the
Open Learning website.
Either type in www.qub.ac.uk/ol
or scan the
QR code above.

Enrolling

Online and postal enrolments only

You can enrol online for all courses by visiting our website www.qub.ac.uk/ol or scan the QR code above. This site is quick and easy to use.

OR

You may enrol by post using the form in this brochure and can pay by cheque only.

Confirmation of Enrolment

When you enrol for a course, you will receive a Confirmation of Enrolment. If you have enrolled online this will be sent to your email address. **The Confirmation of Enrolment is your only acknowledgement of enrolment.** If you enrol and provided an email address a confirmation email will be sent to you. If no email has been provided a copy will be sent out by post.

Over-subscribed and cancelled courses

Numbers in most classes are limited and applications are dealt with in the order we receive them. **You are strongly advised to**

enrol early. The closing date for enrolment on courses where there are still places is one week before the class is due to start. It is with regret that we will not be able to accept any enrolments after that date.

Unfortunately, we are unable to run courses that are under-subscribed so all our courses are offered subject to a certain minimum enrolment (usually 12 students). Occasionally we are forced to cancel a course. If this happens, we shall let you know as soon as we can and refund your enrolment fee.

Please enrol early if you can. Early enrolment helps us provide better service and better value.

Costs and Conditions

There is no upper age limit, however, the minimum age for students attending these adult learning programmes is 18, unless otherwise stated.

The information about each course gives details of the fee that must be paid. For many courses, a concessionary fee is also given. The concession is available for those who are in receipt of State Benefits (including pension), or are full-time students, part or full-time Queen's students or are members of University staff holding a valid staff card.

Please note that concessions cannot be claimed retrospectively.

In order for us to be able to offer a wide-ranging programme, we need to be able to be sure of enrolments, fees and tutor contracts in good time. We regret that fees cannot be refunded except when a course does not run or if the course you applied to is already full. In exceptional circumstances,



for those who have to formally withdraw from the course within the first two weeks of its commencement, we may offer a partial refund (i.e. minus an administration fee).

Venues for courses

Classroom based courses (QUB campus based) are held in venues across the University. Notices telling you where classes will be posted on the internet www.qub.ac.uk/ol the afternoon before the classes are due to start.

Online courses will be on either Microsoft Teams, Zoom or Moodle. Joining instructions will be sent out a week before the class is due to start. All are easy platforms to use.

Health and Safety

At the first class your tutors will advise you of the Health and Safety protocol which includes guidance on what to do in the event of an emergency evacuation or accident.

Car parking

We regret that there is no parking within the University precinct for students attending day-time classes. For evening classes, parking is available from 4.00 pm on the main site.

Facilities and Support for disabled students

We welcome applications from people with disabilities and we will do our best to ensure that your individual requirements are met so you can get the most from your course. **In order to comply with the University's Health and Safety Regulations, all students who may require assistance will need to enrol 3 weeks**

before the class is due to start and complete a Disability Support form. The form can be downloaded from <https://www.qub.ac.uk/sites/open-learning/GeneralInformation/> or can be sent out by post or email if you contact the office at openlearning.education@qub.ac.uk tel: 028 9097 3323.

The completion of this form will determine also if you require a Personal Emergency Evacuation Plan (PEEP) which will be carried out with the Fire Officer, in liaison with the Open Learning Disability Officer, Dr Cathal McManus. Any students who would like further information are very welcome to contact Dr McManus on c.p.mcmanus@qub.ac.uk

Exclusions

The University, via the Open Learning Course Directors, reserves the right to exclude any student from its Open Learning courses for behaviour which:

- (1) is abusive or threatening to other course participants or University staff and/or
- (2) disrupts the learning of other participants and/or
- (3) damages or misuses University equipment or property.

Coming Soon . . .

The Spring 2026 Programme will be available from mid-March 2026. This programme can be viewed online at www.qub.ac.uk/ol or available in booklet format from mid-March. This programme contains courses in all the major subject areas and repeats of many of the popular courses. For further details, telephone 028 9097 3323.



Beat the Blank Page**OLE3251****David Tierney, BA, MA****Fee** £50.00 (concession rate £40.00)**Autumn 2025****One-day workshop on Saturday
22 November, 10.00 am to 4.00 pm**

The concept of “writer’s block” can sometimes encourage us to accept our inability to write rather than develop strategies which support us to write when we need to. In this course we look at some of the most innovative and sometimes bizarre strategies that writers have employed to avoid staring at the blank page. We assess their value to you with research from neuroscience, psychology, personal development and author experience. You will be inspired to take a fresh look at how you write, boost your creativity and curiosity and cultivate a more pro-active approach to your writing projects.

This class will take place on QUB campus

Creative Writing in Genre Fiction**OLE3273****Matthew Munro, BA, MA, MSc, PGCE****Fee** £100.00 (concession rate £80.00)**New Year 2026****10 weekly sessions on Thursdays 6.00 pm
to 8.00 pm, starting 22 January**

Genre fiction, for example crime, fantasy, sci-fi or romance, is often perceived as somehow inferior to literary fiction; more a form of light entertainment rather than true drama. But writing genre fiction is a rigorous calling. It demands inventiveness in plots, settings and characters, entertaining stories filled with twisting narratives and compelling characters. In this course you will learn about structure, setting, description, characterisation, plotting, dialogue, point of view, and how to fashion a compelling story that appears not simply on the page but lives in the reader’s imagination. The course will draw on contemporary examples of successful genre novels to illustrate these themes and will leave participants equipped for and embarked on the journey of writing their own genre fiction novel or short story collection.

This class will take place on QUB campus

Early Bird ...

We make the decision on whether or not to run a course seven days before the course start date, based on whether we have reached the minimum number of enrolments.

So please help us to help you!

Enrolments will close one week before classes are due to start.

Be an early bird and enrol well in advance!



Be an early bird and enrol well in advance



How to Write for Profit and Pleasure**Alf McCreary, BA****Fee** £50.00 (concession rate £40.00)**One-day workshop****Autumn 2025****Group 1** **OLE0272****Saturday 4 October, 9.30 am to 4.30 pm****New Year 2026****Group 2** **OLE0273****Saturday 24 January, 9.30 am to 4.30 pm**

Under the guidance of the award-winning journalist and author Alf McCreary, this course looks at how to turn your ideas into writing, and to learn about the ways to have your writing published. This course will provide guidance on the essential aspects and skills of writing for personal profit and pleasure, and also outline the essential steps required to contact publishers and other outlets where your work may be available to a wider readership. The course is designed for people at all levels, ranging from those people who have not written anything, to those with work already written and who require help in seeking ways to have it published. The course is also designed to help people to enjoy participation and to learn more about their own skills and those of others in the group. This course has been held for nearly two decades and has helped people to aim realistically to have their work published.

These classes will take place on QUB campus

Life Writing: What is My Story?**OLE3427****Maureen Hurdall, BA****Fee** £100.00 (concession rate £80.00)**Autumn 2025****10 weekly sessions on Mondays 11.00 am to 12.00 noon, starting 22 September**

Everyone has their own personal stories about the course their life has taken. Many of us wish to write these down: maybe as a record for generations yet to come, perhaps as therapy, or simply we wish to try our hand at creative writing. Normal writing skills will be included in this 10-week course. If you would like to join us, you will be most welcome, whatever your motivation.

This class will take place on QUB campus

Starting to Write**Louise McIvor, BA, FHEA****Fee** £50.00 (concession rate £40.00)**One-day workshop****Autumn 2025****Group 1** **OLE2048****Friday 3 October, 10.00 am to 4.00 pm****New Year 2026****Group 2** **OLE2279****Friday 30 January, 10.00 am to 4.00 pm**

If you have ever wanted to write fiction but are not sure where to start, this one-day course has been designed especially for you. We will explore how to create believable characters, write dialogue and description and maximise your powers of observation. We will also explore how to structure your story so it all 'hangs together'. Come along and have fun with some stimulating writing exercises.

These classes will take place on QUB campus



Tell Your Story: Writing and Publishing Life Writing/Memoir

OLE3414

Emily Byers-Ferrian, BA, MA

Fee £100.00 (concession rate £80.00)

Autumn 2025

10 weekly sessions on Wednesdays 1.00 pm to 3.00 pm, starting 24 September

Everyone has a story to tell. Most of us have many. This course is for anyone interested in exploring the art of storytelling through creative nonfiction writing, specifically life writing/memoir. During this course, participants will develop a sense of trust and community as they explore examples of life writing; learn about techniques for crafting their story; respond to writing prompts; and practise giving and receiving kind and helpful feedback. Those interested will have the opportunity to prepare a 700–800-word piece to submit for possible publication on RTÉ's Sunday Miscellany radio programme. All levels of experience are welcome! You never know the impact that sharing your story may have on you or another person.

This class will take place on QUB campus

Writing Short Stories

OLE3431

Maureen Hurndall, BA

Fee £100.00 (concession rate £80.00)

New Year 2026

10 weekly sessions on Fridays 10.00 am to 12.00 noon starting 23 January

This course will be fun, as well as providing students with the basic fiction skills of characterisation, creating atmosphere, description, narration, conversation and plot. Students will write a short piece in each class and the group will give feedback.

This class will take place on QUB campus



Two ways to access the
Open Learning website.
Either type in www.qub.ac.uk/ol
or scan the
QR code above.



tions.

Amadan: an ungainly, foolish sort of person, usually male, characteristically clumsy behaviour induces a mixture of scorn. [Irish 'amadan' = a fool.]

American wake: traditionally a social gathering at the house of someone leaving for America the next day. There would be a mixture of jollification and sadness at the realisation that it might be a long time before the departing friend or neighbour ever again set foot in Ireland.

Angersome: troublesome; tending to anger. Said of an annoying person or their behaviour.

Angleberry: a wart or welt affecting cattle.

Angry: swollen or painful-looking. Said of a boil or other infection swelling prior to suppuration; *That's an angry lump you have on your chin.*

Against: unbeknownst; without knowledge of; *He left the house without telling me.*

Against: to suit (a purpose or condition); *I'll go if it answers, if it is convenient.*

Against: to appear, usually on the face.

Against: a position; place; point of the compass; *What art of the wind is it?* Often used in conjunction with parts; *The wind is from the north-east and parts.* [Irish and Scottish Gaelic]

Against: a hard or cheeky child; *He was a bit of a cheeky one, but he was a good boy at heart.* Often used to cover any of a number of expressions 'a bit of a cheeky one'.

The Heart's Townland

marking boundaries in Ulster

including
Patric Longhrev
Eugene McCat
Jack John
Patrick L

ed by
Brian Turner

Alton 120
Alton 121
Alton 122
Alton 123
Alton 124
Alton 125
Alton 126
Alton 127
Alton 128
Alton 129
Alton 130
Alton 131
Alton 132
Alton 133
Alton 134
Alton 135
Alton 136
Alton 137
Alton 138
Alton 139
Alton 140
Alton 141
Alton 142
Alton 143
Alton 144
Alton 145
Alton 146
Alton 147
Alton 148
Alton 149
Alton 150
Alton 151
Alton 152
Alton 153
Alton 154
Alton 155
Alton 156
Alton 157
Alton 158
Alton 159
Alton 160
Alton 161
Alton 162
Alton 163
Alton 164
Alton 165
Alton 166
Alton 167
Alton 168
Alton 169
Alton 170
Alton 171
Alton 172
Alton 173
Alton 174
Alton 175
Alton 176
Alton 177
Alton 178
Alton 179
Alton 180
Alton 181
Alton 182
Alton 183
Alton 184
Alton 185
Alton 186
Alton 187
Alton 188
Alton 189
Alton 190
Alton 191
Alton 192
Alton 193
Alton 194
Alton 195
Alton 196
Alton 197
Alton 198
Alton 199
Alton 200
Alton 201
Alton 202
Alton 203
Alton 204
Alton 205
Alton 206
Alton 207
Alton 208
Alton 209
Alton 210
Alton 211
Alton 212
Alton 213
Alton 214
Alton 215
Alton 216
Alton 217
Alton 218
Alton 219
Alton 220
Alton 221
Alton 222
Alton 223
Alton 224
Alton 225
Alton 226
Alton 227
Alton 228
Alton 229
Alton 230
Alton 231
Alton 232
Alton 233
Alton 234
Alton 235
Alton 236
Alton 237
Alton 238
Alton 239
Alton 240
Alton 241
Alton 242
Alton 243
Alton 244
Alton 245
Alton 246
Alton 247
Alton 248
Alton 249
Alton 250
Alton 251
Alton 252
Alton 253
Alton 254
Alton 255
Alton 256
Alton 257
Alton 258
Alton 259
Alton 260
Alton 261
Alton 262
Alton 263
Alton 264
Alton 265
Alton 266
Alton 267
Alton 268
Alton 269
Alton 270
Alton 271
Alton 272
Alton 273
Alton 274
Alton 275
Alton 276
Alton 277
Alton 278
Alton 279
Alton 280
Alton 281
Alton 282
Alton 283
Alton 284
Alton 285
Alton 286
Alton 287
Alton 288
Alton 289
Alton 290
Alton 291
Alton 292
Alton 293
Alton 294
Alton 295
Alton 296
Alton 297
Alton 298
Alton 299
Alton 300
Alton 301
Alton 302
Alton 303
Alton 304
Alton 305
Alton 306
Alton 307
Alton 308
Alton 309
Alton 310
Alton 311
Alton 312
Alton 313
Alton 314
Alton 315
Alton 316
Alton 317
Alton 318
Alton 319
Alton 320
Alton 321
Alton 322
Alton 323
Alton 324
Alton 325
Alton 326
Alton 327
Alton 328
Alton 329
Alton 330
Alton 331
Alton 332
Alton 333
Alton 334
Alton 335
Alton 336
Alton 337
Alton 338
Alton 339
Alton 340
Alton 341
Alton 342
Alton 343
Alton 344
Alton 345
Alton 346
Alton 347
Alton 348
Alton 349
Alton 350
Alton 351
Alton 352
Alton 353
Alton 354
Alton 355
Alton 356
Alton 357
Alton 358
Alton 359
Alton 360
Alton 361
Alton 362
Alton 363
Alton 364
Alton 365
Alton 366
Alton 367
Alton 368
Alton 369
Alton 370
Alton 371
Alton 372
Alton 373
Alton 374
Alton 375
Alton 376
Alton 377
Alton 378
Alton 379
Alton 380
Alton 381
Alton 382
Alton 383
Alton 384
Alton 385
Alton 386
Alton 387
Alton 388
Alton 389
Alton 390
Alton 391
Alton 392
Alton 393
Alton 394
Alton 395
Alton 396
Alton 397
Alton 398
Alton 399
Alton 400
Alton 401
Alton 402
Alton 403
Alton 404
Alton 405
Alton 406
Alton 407
Alton 408
Alton 409
Alton 410
Alton 411
Alton 412
Alton 413
Alton 414
Alton 415
Alton 416
Alton 417
Alton 418
Alton 419
Alton 420
Alton 421
Alton 422
Alton 423
Alton 424
Alton 425
Alton 426
Alton 427
Alton 428
Alton 429
Alton 430
Alton 431
Alton 432
Alton 433
Alton 434
Alton 435
Alton 436
Alton 437
Alton 438
Alton 439
Alton 440
Alton 441
Alton 442
Alton 443
Alton 444
Alton 445
Alton 446
Alton 447
Alton 448
Alton 449
Alton 450
Alton 451
Alton 452
Alton 453
Alton 454
Alton 455
Alton 456
Alton 457
Alton 458
Alton 459
Alton 460
Alton 461
Alton 462
Alton 463
Alton 464
Alton 465
Alton 466
Alton 467
Alton 468
Alton 469
Alton 470
Alton 471
Alton 472
Alton 473
Alton 474
Alton 475
Alton 476
Alton 477
Alton 478
Alton 479
Alton 480
Alton 481
Alton 482
Alton 483
Alton 484
Alton 485
Alton 486
Alton 487
Alton 488
Alton 489
Alton 490
Alton 491
Alton 492
Alton 493
Alton 494
Alton 495
Alton 496
Alton 497
Alton 498
Alton 499
Alton 500
Alton 501
Alton 502
Alton 503
Alton 504
Alton 505
Alton 506
Alton 507
Alton 508
Alton 509
Alton 510
Alton 511
Alton 512
Alton 513
Alton 514
Alton 515
Alton 516
Alton 517
Alton 518
Alton 519
Alton 520
Alton 521
Alton 522
Alton 523
Alton 524
Alton 525
Alton 526
Alton 527
Alton 528
Alton 529
Alton 530
Alton 531
Alton 532
Alton 533
Alton 534
Alton 535
Alton 536
Alton 537
Alton 538
Alton 539
Alton 540
Alton 541
Alton 542
Alton 543
Alton 544
Alton 545
Alton 546
Alton 547
Alton 548
Alton 549
Alton 550
Alton 551
Alton 552
Alton 553
Alton 554
Alton 555
Alton 556
Alton 557
Alton 558
Alton 559
Alton 560
Alton 561
Alton 562
Alton 563
Alton 564
Alton 565
Alton 566
Alton 567
Alton 568
Alton 569
Alton 570
Alton 571
Alton 572
Alton 573
Alton 574
Alton 575
Alton 576
Alton 577
Alton 578
Alton 579
Alton 580
Alton 581
Alton 582
Alton 583
Alton 584
Alton 585
Alton 586
Alton 587
Alton 588
Alton 589
Alton 590
Alton 591
Alton 592
Alton 593
Alton 594
Alton 595
Alton 596
Alton 597
Alton 598
Alton 599
Alton 600
Alton 601
Alton 602
Alton 603
Alton 604
Alton 605
Alton 606
Alton 607
Alton 608
Alton 609
Alton 610
Alton 611
Alton 612
Alton 613
Alton 614
Alton 615
Alton 616
Alton 617
Alton 618
Alton 619
Alton 620
Alton 621
Alton 622
Alton 623
Alton 624
Alton 625
Alton 626
Alton 627
Alton 628
Alton 629
Alton 630
Alton 631
Alton 632
Alton 633
Alton 634
Alton 635
Alton 636
Alton 637
Alton 638
Alton 639
Alton 640
Alton 641
Alton 642
Alton 643
Alton 644
Alton 645
Alton 646
Alton 647
Alton 648
Alton 649
Alton 650
Alton 651
Alton 652
Alton 653
Alton 654
Alton 655
Alton 656
Alton 657
Alton 658
Alton 659
Alton 660
Alton 661
Alton 662
Alton 663
Alton 664
Alton 665
Alton 666
Alton 667
Alton 668
Alton 669
Alton 670
Alton 671
Alton 672
Alton 673
Alton 674
Alton 675
Alton 676
Alton 677
Alton 678
Alton 679
Alton 680
Alton 681
Alton 682
Alton 683
Alton 684
Alton 685
Alton 686
Alton 687
Alton 688
Alton 689
Alton 690
Alton 691
Alton 692
Alton 693
Alton 694
Alton 695
Alton 696
Alton 697
Alton 698
Alton 699
Alton 700
Alton 701
Alton 702
Alton 703
Alton 704
Alton 705
Alton 706
Alton 707
Alton 708
Alton 709
Alton 710
Alton 711
Alton 712
Alton 713
Alton 714
Alton 715
Alton 716
Alton 717
Alton 718
Alton 719
Alton 720
Alton 721
Alton 722
Alton 723
Alton 724
Alton 725
Alton 726
Alton 727
Alton 728
Alton 729
Alton 730
Alton 731
Alton 732
Alton 733
Alton 734
Alton 735
Alton 736
Alton 737
Alton 738
Alton 739
Alton 740
Alton 741
Alton 742
Alton 743
Alton 744
Alton 745
Alton 746
Alton 747
Alton 748
Alton 749
Alton 750
Alton 751
Alton 752
Alton 753
Alton 754
Alton 755
Alton 756
Alton 757
Alton 758
Alton 759
Alton 760
Alton 761
Alton 762
Alton 763
Alton 764
Alton 765
Alton 766
Alton 767
Alton 768
Alton 769
Alton 770
Alton 771
Alton 772
Alton 773
Alton 774
Alton 775
Alton 776
Alton 777
Alton 778
Alton 779
Alton 780
Alton 781
Alton 782
Alton 783
Alton 784
Alton 785
Alton 786
Alton 787
Alton 788
Alton 789
Alton 790
Alton 791
Alton 792
Alton 793
Alton 794
Alton 795
Alton 796
Alton 797
Alton 798
Alton 799
Alton 800
Alton 801
Alton 802
Alton 803
Alton 804
Alton 805
Alton 806
Alton 807
Alton 808
Alton 809
Alton 810
Alton 811
Alton 812
Alton 813
Alton 814
Alton 815
Alton 816
Alton 817
Alton 818
Alton 819
Alton 820
Alton 821
Alton 822
Alton 823
Alton 824
Alton 825
Alton 826
Alton 827
Alton 828
Alton 829
Alton 830
Alton 831
Alton 832
Alton 833
Alton 834
Alton 835
Alton 836
Alton 837
Alton 838
Alton 839
Alton 840
Alton 841
Alton 842
Alton 843
Alton 844
Alton 845
Alton 846
Alton 847
Alton 848
Alton 849
Alton 850
Alton 851
Alton 852
Alton 853
Alton 854
Alton 855
Alton 856
Alton 857
Alton 858
Alton 859
Alton 860
Alton 861
Alton 862
Alton 863
Alton 864
Alton 865
Alton 866
Alton 867
Alton 868
Alton 869
Alton 870
Alton 871
Alton 872
Alton 873
Alton 874
Alton 875
Alton 876
Alton 877
Alton 878
Alton 879
Alton 880
Alton 881
Alton 882
Alton 883
Alton 884
Alton 885
Alton 886
Alton 887
Alton 888
Alton 889
Alton 890
Alton 891
Alton 892
Alton 893
Alton 894
Alton 895
Alton 896
Alton 897
Alton 898
Alton 899
Alton 900
Alton 901
Alton 902
Alton 903
Alton 904
Alton 905
Alton 906
Alton 907
Alton 908
Alton 909
Alton 910
Alton 911
Alton 912
Alton 913
Alton 914
Alton 915
Alton 916
Alton 917
Alton 918
Alton 919
Alton 920
Alton 921
Alton 922
Alton 923
Alton 924
Alton 925
Alton 926
Alton 927
Alton 928
Alton 929
Alton 930
Alton 931
Alton 932
Alton 933
Alton 934
Alton 935
Alton 936
Alton 937
Alton 938
Alton 939
Alton 940
Alton 941
Alton 942
Alton 943
Alton 944
Alton 945
Alton 946
Alton 947
Alton 948
Alton 949
Alton 950
Alton 951
Alton 952
Alton 953
Alton 954
Alton 955
Alton 956
Alton 957
Alton 958
Alton 959
Alton 960
Alton 961
Alton 962
Alton 963
Alton 964
Alton 965
Alton 966
Alton 967
Alton 968
Alton 969
Alton 970
Alton 971
Alton 972
Alton 973
Alton 974
Alton 975
Alton 976
Alton 977
Alton 978
Alton 979
Alton 980
Alton 981
Alton 982
Alton 983
Alton 984
Alton 985
Alton 986
Alton 987
Alton 988
Alton 989
Alton 990
Alton 991
Alton 992
Alton 993
Alton 994
Alton 995
Alton 996
Alton 997
Alton 998
Alton 999
Alton 1000

Alton 120
Alton 121
Alton 122
Alton 123
Alton 124
Alton 125
Alton 126
Alton 127
Alton 128
Alton 129
Alton 130
Alton 131
Alton 132
Alton 133
Alton 134
Alton 135
Alton 136
Alton 137
Alton 138
Alton 139
Alton 140
Alton 141
Alton 142
Alton 143
Alton 144
Alton 145
Alton 146
Alton 147
Alton 148
Alton 149
Alton 150
Alton 151
Alton 152
Alton 153
Alton 154
Alton 155
Alton 156
Alton 157
Alton 158
Alton 159
Alton 160
Alton 161
Alton 162
Alton 163
Alton 164
Alton 165
Alton 166
Alton 167
Alton 168
Alton 169
Alton 170
Alton 171
Alton 172
Alton 173
Alton 174
Alton 175
Alton 176
Alton 177
Alton 178
Alton 179
Alton 180
Alton 181
Alton 182
Alton 183
Alton 184
Alton 185
Alton 186
Alton 187
Alton 188
Alton 189
Alton 190
Alton 191
Alton 192
Alton 193
Alton 194
Alton 195
Alton 196
Alton 197
Alton 198
Alton 199
Alton 200
Alton 201
Alton 202
Alton 203
Alton 204
Alton 205
Alton 206
Alton 207
Alton 208
Alton 209
Alton 210
Alton 211
Alton 212
Alton 213
Alton 214
Alton 215
Alton 216
Alton 217
Alton 218
Alton 219
Alton 220
Alton 221
Alton 222
Alton 223
Alton 224
Alton 225
Alton 226
Alton 227
Alton 228
Alton 229
Alton 230
Alton 231
Alton 232
Alton 233
Alton 234
Alton 235
Alton 236
Alton 237
Alton 238
Alton 239
Alton 240
Alton 241
Alton 242
Alton 243
Alton 244
Alton 245
Alton 246
Alton 247
Alton 248
Alton 249
Alton 250
Alton 251
Alton 252
Alton 253
Alton 254
Alton 255
Alton 256
Alton 257
Alton 258
Alton 259
Alton 260
Alton 261
Alton 262
Alton 263
Alton 264
Alton 265
Alton 266
Alton 267
Alton 268
Alton 269
Alton 270
Alton 271
Alton 272
Alton 273
Alton 274
Alton 275
Alton 276
Alton 277
Alton 278
Alton 279
Alton 280
Alton 281
Alton 282
Alton 283
Alton 284
Alton 285
Alton 286
Alton 287
Alton 288
Alton 289
Alton 290
Alton 291
Alton 292
Alton 293
Alton 294
Alton 295
Alton 296
Alton 297
Alton 298
Alton 299
Alton 300
Alton 301
Alton 302
Alton 303
Alton 304
Alton 305
Alton 306
Alton 307
Alton 308
Alton 309
Alton 310
Alton 311
Alton 312
Alton 313
Alton 314
Alton 315
Alton 316
Alton 317
Alton 318
Alton 319
Alton 320
Alton 321
Alton 322
Alton 323
Alton 324
Alton 325
Alton 326
Alton 327
Alton 328
Alton 329
Alton 330
Alton 331
Alton 332
Alton 333
Alton 334
Alton 335
Alton 336
Alton 337
Alton 338
Alton 339
Alton 340
Alton 341
Alton 342
Alton 343
Alton 344
Alton 345
Alton 346
Alton 347
Alton 348
Alton 349
Alton 350
Alton 351
Alton 352
Alton 353
Alton 354
Alton 355
Alton 356
Alton 357
Alton 358
Alton 359
Alton 360
Alton 361
Alton 362
Alton 363
Alton 364
Alton 365
Alton 366
Alton 367
Alton 368
Alton 369
Alton 370
Alton 371
Alton 372
Alton 373
Alton 374
Alton 375
Alton 376
Alton 377
Alton 378
Alton 379
Alton 380
Alton 381
Alton 382
Alton 383
Alton 384
Alton 385
Alton 386
Alton 387
Alton 388
Alton 389
Alton 390
Alton 391
Alton 392
Alton 393
Alton 394
Alton 395
Alton 396
Alton 397
Alton 398
Alton 399
Alton 400
Alton 401
Alton 402
Alton 403
Alton 404
Alton 405
Alton 406
Alton 407
Alton 408
Alton 409
Alton 410
Alton 411
Alton 412
Alton 413
Alton 414
Alton 415
Alton 416
Alton 417
Alton 418
Alton 419
Alton 420
Alton 421
Alton 422
Alton 423
Alton 424
Alton 425
Alton 426
Alton 427
Alton 428
Alton 429
Alton 430
Alton 431
Alton 432
Alton 433
Alton 434
Alton 435
Alton 436
Alton 437
Alton 438
Alton 439
Alton 440
Alton 441
Alton 442
Alton 443
Alton 444
Alton 445
Alton 446
Alton 447
Alton 448
Alton 449
Alton 450
Alton 451
Alton 452
Alton 453
Alton 454
Alton 455
Alton 456
Alton 457
Alton 458
Alton 459
Alton 460
Alton 461
Alton 462
Alton 463
Alton 464
Alton 465
Alton 466
Alton 467
Alton 468
Alton 469
Alton 470
Alton 471
Alton 472
Alton 473
Alton 474
Alton 475
Alton 476
Alton 477
Alton 478
Alton 479
Alton 480
Alton 481
Alton 482
Alton 483
Alton 484
Alton 485
Alton 486
Alton 487
Alton 488
Alton 489
Alton 490
Alton 491
Alton 492
Alton 493
Alton 494
Alton 495
Alton 496
Alton 497
Alton 498
Alton 499
Alton 500
Alton 501
Alton 502
Alton 503
Alton 504
Alton 505
Alton 506
Alton 507
Alton 508
Alton 509
Alton 510
Alton 511
Alton 512
Alton 513
Alton 514
Alton 515
Alton 516
Alton 517
Alton 518
Alton 519
Alton 520
Alton 521
Alton 522
Alton 523
Alton 524
Alton 525
Alton 526
Alton 527
Alton 528
Alton 529
Alton 530
Alton 531
Alton 532
Alton 533
Alton 534
Alton 535
Alton 536
Alton 537
Alton 538
Alton 539
Alton 540
Alton 541
Alton 542
Alton 543
Alton 544
Alton 545
Alton 546
Alton 547
Alton 548
Alton 549
Alton 550
Alton 551
Alton 552
Alton 553
Alton 554
Alton 555
Alton 556
Alton 557
Alton 558
Alton 559
Alton 560
Alton 561
Alton 562
Alton 563
Alton 564
Alton 565
Alton 566
Alton 567
Alton 568
Alton 569
Alton 570
Alton 571
Alton 572
Alton 573
Alton 574
Alton 575
Alton 576
Alton 577
Alton 578
Alton 579
Alton 580
Alton 581
Alton 582
Alton 583
Alton 584
Alton 585
Alton 586
Alton 587
Alton 588
Alton 589
Alton 590
Alton 591
Alton 592
Alton 593
Alton 594
Alton 595
Alton 596
Alton 597
Alton 598
Alton 599
Alton 600
Alton 601
Alton 602
Alton 603
Alton 604
Alton 605
Alton 606
Alton 607
Alton 608
Alton 609
Alton 610
Alton 611
Alton 612
Alton 613
Alton 614
Alton 615
Alton 616
Alton 617
Alton 618
Alton 619
Alton 620
Alton 621
Alton 622
Alton 623
Alton 624
Alton 625
Alton 626
Alton 627
Alton 628
Alton 629
Alton 630
Alton 631
Alton 632
Alton 633
Alton 634
Alton 635
Alton 636
Alton 637
Alton 638
Alton 639
Alton 640
Alton 641
Alton 642
Alton 643
Alton 644
Alton 645
Alton 646
Alton 647
Alton 648
Alton 649
Alton 650
Alton 651
Alton 652
Alton 653
Alton 654
Alton 655
Alton 656
Alton 657
Alton 658
Alton 659
Alton 660
Alton 661
Alton 662
Alton 663
Alton 664
Alton 665
Alton 666
Alton 667
Alton 668
Alton 669
Alton 670
Alton 671
Alton 672
Alton 673
Alton 674
Alton 675
Alton 676
Alton 677
Alton 678
Alton 679
Alton 680
Alton 681
Alton 682
Alton 683
Alton 684
Alton 685
Alton 686
Alton 687
Alton 688
Alton 689
Alton 690
Alton 691
Alton 692
Alton 693
Alton 694
Alton 695
Alton 696
Alton 697
Alton 698
Alton 699
Alton 700
Alton 701
Alton 702
Alton 703
Alton 704
Alton 705
Alton 706
Alton 707
Alton 708
Alton 709
Alton 710
Alton 711
Alton 712
Alton 713
Alton 714
Alton 715
Alton 716
Alton 717
Alton 718
Alton 719
Alton 720
Alton 721
Alton 722
Alton 723
Alton 724
Alton 725
Alton 726
Alton 727
Alton 728
Alton 729
Alton 730
Alton 731
Alton 732
Alton 733
Alton 734
Alton 735
Alton 736
Alton 737
Alton 738
Alton 739
Alton 740
Alton 741
Alton 742
Alton 743
Alton 744
Alton 745
Alton 746
Alton 747
Alton 748
Alton 749
Alton 750
Alton 751
Alton 752
Alton 753
Alton 754
Alton 755
Alton 756
Alton 757
Alton 758
Alton 759
Alton 760
Alton 761
Alton 762
Alton 763
Alton 764
Alton 765
Alton

Ekphrasis: Poetry Inspired by Art**OLE3383****Maureen Boyle, MA****Fee** £100.00 (concession rate £80.00)**New Year 2026****10 weekly sessions on Thursdays 11.00 am to 1.00 pm, starting 22 January**

In this course we will look at examples of ekphrasis, traditionally writing inspired by visual art, and we will visit galleries and write from work there. We hope also in this term to extend the work to include ekphrasis from film or theatre so students should be prepared for at least one cinema or theatre trip.

This class will take place on QUB campus and other venues

‘Maureen is an excellent tutor, so knowledgeable and encouraging. There is always something new and interesting at each class.’

Ekphrasis Writing Poetry from Art –
Maureen Boyle

We’re Not Just Pottering Around: Arts, Crafts, and “Women’s Work”**OLE3409****Elena Bergia, BA, MSc, PhD****Fee** £38.00 (concession rate £30.00)**Autumn 2025****5 weekly sessions on Tuesdays, 6.00 pm to 7.30 pm starting 23 September**

Historically, the products of women’s creativity have been downplayed as ‘crafts’ and differentiated from ‘art,’ a noble endeavour that belonged mostly, if not exclusively, to men. ‘Women’s work’ was the expression used to indicate the countless ways in which women could express their creativity and included a variety of traditionally female activities such as weaving, embroidering, quilting, scrapbooking, cooking. Even though women from different backgrounds have always incorporated skills and creativity into their daily lives, the products of their work were regarded as radically inferior to works of art. In this course, we will question the distinction between art and craft looking at the work of women, ‘famous’ or otherwise, who blurred the boundaries and showed us that creating beautiful objects for daily use is not just pottering about: it’s a form of art.

This class will take place on QUB campus



Basic and Creative Photography**Nick Smith**, City and Guilds (Photography), MEd**Fee** £125.00 (concession rate £100.00)**10 weekly sessions****Autumn 2025****Group 1** **OLE1884****Mondays 6.00 pm to 8.00 pm,**
starting 22 September + 3 hour field trip
Saturday 27 September**New Year 2026****Group 2** **OLE1881****Mondays 6.00 pm to 8.00 pm,**
starting 19 January + 3 hour field trip
Saturday 24 January

This course sets out to explain firstly the basic camera controls and their uses, then moves you on to the ones used to create more striking, colourful or detailed images. We will look at night-time shots, basic transfer and editing, composition styles and more! It is targeted at those new to digital SLR or mirrorless cameras, or those looking to move up to these. This course will include an outdoor walking group on the first Saturday after introduction week, night-time shots, basic transfer and editing, composition styles and more!

These classes will take place on QUB campus

Creative Photography**OLE2733****Gary O’Kane**, City and Guilds Photography**Fee** £100.00 (concession rate £80.00)**New Year 2026****10 weekly sessions on Thursdays 7.00 pm to 9.00 pm, starting 22 January**

Expand on your basic knowledge of photography, improve your technique, learn how to capture long exposure shots, take advantage of your flash for creative effects and make use of filters to enhance your final shots. The class will combine a mix of practical exercise and theory in a relaxed atmosphere. Suitable for the intermediate photographer.

This class will take place on QUB campus

‘I really enjoyed the course. Nick was very approachable and helpful, explaining the principles and techniques of photography clearly. It is so useful to have detailed handouts and I particularly enjoyed the practical sessions.’

Basic and creative photography Group 1 –
Nick Smith



Photoshop for the Beginner**OLE2734****Gary O'Kane, City and Guilds Photography****Fee** £100.00 (concession rate £80.00)**Autumn 2025****10 weekly sessions on Thursdays 7.00 pm to 9.00 pm, starting 25 September**

This course will 'start at the beginning' and will build on the various Photoshop tools to alter and enhance digital images. The class will combine a mix of practical tasks and theory in a relaxed atmosphere. Suitable for the beginner and users of Adobe Photoshop, Photoshop Elements and Affinity Photo.

This class will take place on QUB campus

Boost Your Reading Brain**OLE3284****David Tierney, BA, MA****Fee** £50.00 (concession rate £40.00)**Autumn 2025****One-day workshop on Saturday 25 October, 10.00 am to 4.00 pm**

According to Francis Bacon, the 17th Century English philosopher: 'Some books are to be tasted, some to be swallowed and some to be chewed on and digested'. In this course we examine your reading style and through an innovative set of exercises look at ways that you can read more efficiently and effectively. Understanding the effects of reading on the brain can not only help us retain information easier but also increase our reading enjoyment. It will also give you some practical advice on how you decide, as Bacon outlined, those books worthy of a quick read, those to be read thoroughly and those to be read slowly and thoughtfully.

This class will take place on QUB campus

Early Bird ...

We make the decision on whether or not to run a course seven days before the course start date, based on whether we have reached the minimum number of enrolments.

So please help us to help you!

Enrolments will close one week before classes are due to start.

Be an early bird and enrol well in advance!



Be an early bird and enrol well in advance



Critical Thinking**OLE3384****Michael Kelly, BA, MA****Fee** £100.00 (concession rate £80.00)**New Year 2026****10 weekly sessions on Tuesdays 6.00 pm to 8.00 pm, starting 20 January**

Critical Thinking can be defined as ‘the ability to interpret, analyse and evaluate ideas and arguments.’ It is increasingly felt that such skills are important in everyday life, a basic competency which, like reading and writing, can be taught. This course endeavours to explore these techniques in depth and examines them through the study of certain key topics. These include: identifying reasons; and conclusions; understanding reasoning; the clarification and interpretation of ideas; assessing the validity of sources; and decision making. So, if you are serious about improving your critical thinking skills, then this is the course for you!

This class will take place on QUB campus
No class on Tuesday 17 March



**Two ways to access the
Open Learning website.**

Either type in **www.qub.ac.uk/ol**
or scan the
QR code above.

Teaching English to Migrants, Refugees and Asylum Seekers**OLE2878****Arthur McKeown, MA, MBA, DELTA, PGCE****Aisling O’Boyle, BSc, MA, PhD, DELTA****Fee** £50.00 (concession rate £40.00)**New Year 2026****5 weekly sessions on Tuesdays 6.00 pm to 8.00 pm, starting 20 January**

Northern Ireland is now a place where people have come to build new lives. English is essential as they seek to integrate and secure employment. People across Northern Ireland want to change the lives of newly arrived adults by volunteering to help them to learn English. This course introduces principles, resources and techniques for providing English in a community setting. The course aims to develop the knowledge and understanding of the English language needs of adult migrants, refugees and asylum seekers; to introduce some resources and teaching techniques which are appropriate for teaching English language to adult migrants, refugees and asylum seekers, and to prepare participants for the design, documentation and delivery of English language teaching suitable for the needs of adult migrants, refugees and asylum seekers in their community.

This class will take place on QUB campus



The Intercultural School: Working with Newcomer and Traveller Students in Schools, Part 1

Lesley Millar, LLB, PGCE (primary and post primary)

Jane Camara, BEd (primary)

Grainne Murray, BA, PGCE (primary)

Brid Maher, BA, PGCE, PGDE (Tsol) (post primary)

Fee £85.00 (concession rate £55.00)

Autumn 2025

Online course starting week starting Monday 22 September for 10 weeks

Working with Newcomer and Traveller Pupils in Primary Schools OLE2379

Working with Newcomer and Traveller Students in Post Primary Schools OLE2594

This course is aimed at teachers and classroom assistants who work with Newcomer and Traveller students in schools. The course will cover intercultural awareness, welcome and communication, assessment and planning, curriculum access (the early days) and curriculum access (moving on). There will be four assignments to complete. Each unit will run over two weeks and will take between 3-4 hours to complete.

This is an online course

The Intercultural School: Working with Newcomer Students in Schools, Part 2

Lesley Millar, LLB, PGCE (primary and post primary)

Jane Camara, BEd (primary)

Grainne Murray, BA, PGCE (primary)

Brid Maher, BA, PGCE, PGDE (Tsol) (post primary)

Fee £45.00 (concession rate £30.00)

New Year 2026

Online course starting week starting Monday 19 January for 5 weeks

Working with Newcomer Pupils in Primary Schools: OLE2380

Working with Newcomer Students in Post Primary Schools OLE2595

This is a follow-on course for teachers and classroom assistants who have completed the course Working with Newcomer and Traveller pupils in the Primary School. It covers three areas: leadership and management for Newcomer coordinators, working with Newcomer pupils who have less well-developed literacy skills and working with withdrawal groups. The course lasts five weeks and there are two assignments.

This is an online course



Understanding Refugee and Asylum Systems - A Beginner's Workshop

Edie Shillue, PhD

Fee £50.00 (concession rate £40.00)

One-day workshop

Autumn 2025

Group 1 OLE3248

Saturday 11 October 10.00 am to 4.00 pm

New Year 2026

Group 2 OLE3393

Saturday 7 March, 10.00 am to 4.00 pm

Do you volunteer with organisations supporting Refugees and Asylum Seekers? Want to know how government addresses their needs? Are you interested in understanding the right to claim asylum? This session provides a practical overview of resettlement and asylum processes in the UK including NI. We will meet people who work with and volunteer to support those who are displaced and see how organisations have adapted.

These classes will take place on QUB campus

Understanding UK Asylum Systems: An Advanced Workshop

Edie Shillue, PhD

Fee £50.00 (concession rate £40.00)

One-day workshop

Autumn 2025

Group 1 OLE3392

Saturday 8 November 10.00 am to 4.00 pm

New Year 2026

Group 2 OLE3394

Saturday 21 March 10.00 am to 4.00 pm

Do you volunteer with organisations supporting people seeking asylum? Want to know how government addresses their needs? This session provides an advanced but practical overview of the asylum system in the UK including NI, including understanding destitution, positive decisions and what happens when people are refused. We'll meet people who work with and volunteer to support people and see how organisations have adapted to community changes over the past three years. We will talk with volunteers, professionals and those doing everyday outreach throughout the province.

These classes will take place on QUB campus

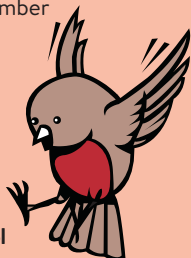
Early Bird ...

We make the decision on whether or not to run a course seven days before the course start date, based on whether we have reached the minimum number of enrolments.

So please help us to help you!

Enrolments will close one week before classes are due to start.

Be an early bird and enrol well in advance!



Affecting Ecological and Environmental Change

OLE3370

Roy Nelson, PhD

Fee £30.00 (concession rate £24.00)

New Year 2026

3 weekly sessions on Thursdays 7.00 pm to 9.00 pm, starting 5 February

Ecology by its nature is a field that addresses the interaction of organisms with the environment and in doing so regularly involves human activities. Currently in Northern Ireland we are facing many issues and problems concerned with the ongoing pressures that are affecting us all – for example biodiversity loss, pollution of our waterways, and climate change. Many of us wish to change how others behave towards these issues, and we would like to change people's beliefs and attitudes, and ultimately the decisions they may make. This can take place either at an individual, group or community level. The use of effective communication strategies that consider situations where human judgement is involved and is directed at either individuals or groups of people is key to bringing about desired change. This course will examine the skills needed to be an effective communicator. It will provide an adaptable toolkit that can be used to bring about the desired change relating to the ecological problems that are facing us all. These skills will include how to direct the desired message and its limitations, and the methods that can be employed to overcome resistance. The aim is therefore to achieve environmental change that is desired and necessary if we are to avoid the future threats of not doing anything.

This class will take place on QUB campus

Easy Bird Watching for Beginners: Winter

Dot Blakely

Fee £100.00 (concession rate £80.00)

10 weekly sessions

Autumn 2025

Group 1 OLE2351

Thursdays starting 25 September, (25 September and 23 October are classroom based from 7.00 pm to 9.00 pm and the remaining 8 weeks are field trips and run between 10.00 am and 12.00 noon).

Group 2 OLE3443

Fridays starting 26 September, (26 September and 24 October are classroom based from 7.00 pm to 9.00 pm and the remaining 8 weeks are field trips and run between 10.00 am and 12.00 noon).

A timetable will be distributed on the first evening.

Autumn/Winter is a wonderful bird watching season. Thousands of wildfowl and waders migrate for the winter from Northern Canada and Europe. The local field trips will open your eyes to all the different species of beautiful ducks, geese and swans. We will be looking at our own garden birds and how they get through the winter. Own transport essential, outdoor clothing, if possible, binoculars.

'A brilliant course delivered by an inspirational teacher. I can't recommend it highly enough.'

Bird watching for beginners: Winter – Dot Blakely



Bird Watching for Beginners: Spring**Dot Blakely**

Fee £100.00 (concession rate £80.00)

10 weekly sessions

New Year 2026

Group 1 OLE2495

Thursdays starting 22 January (22 January and 12 February are classroom based from 7.00 pm to 9.00 pm and the remaining 8 weeks are field trips and run between 10.00 am and 12.00 noon).

Group 2 OLE3444

Fridays starting 23 January (23 January and 13 February are classroom based from 7.00 pm to 9.00 pm and the remaining 8 weeks are field trips and run between 10.00 am and 12.00 noon).

A timetable will be distributed on the first evening.

Since September we have enjoyed thousands of wildfowl and waders which have been overwintering with us from Iceland and Europe. Now they are feeding up to get ready for their journey back to their breeding grounds. Spring is on the way, our woodland birds will be moving into their breeding territory. We will be looking and listening to birds in their habitat. For field trips, own transport is essential as well as waterproof clothing, boots and (if possible) binoculars.

How Plants Work

OLE3421

Roy Nelson, PhD

Fee £50.00 (concession rate £40.00)

New Year 2026

5 weekly sessions on Tuesdays 2.00 pm to 4.00 pm, starting 27 January

In this course you will begin to understand how a plant functions, is crucial to appreciating their role in our environment. As primary producers, plants form the foundation of the ecosystems we see today. Their survival and growth are intertwined with the lives of many animals and fungi, resulting in a complex web of interactions. Plants capture energy from the sun through photosynthesis, which drives their growth and leads to the diverse forms we observe. This process involves several fascinating mechanisms, such as nutrient absorption through roots, leaf structures designed to harness sunlight, and growth patterns that establish the plant's form. Studying these mechanisms reveals the vast variety of plant life in our landscapes and gardens. On completion of the course you will learn how plants capture energy in different ways, and gain insights into their relationships with their surroundings, including other plants, fungi, and various animals. For example, plants have unique ways of measuring time, moving to maximize sunlight exposure, and displaying a range of colours as they grow and change with the seasons. This knowledge helps us understand the vital role plants play in maintaining the balance of our natural world.

This class will take place on QUB campus



Native Trees: Their Identification and Place in Society

OLE3236

Roy Nelson, PhD

Fee £50.00 (concession rate £40.00)

Autumn 2025

5 weekly sessions on Thursdays 2.00 pm to 4.00 pm, starting 25 September

The native and indigenous trees of Ireland play a significant role in society and are central in maintaining biodiversity whilst providing us with comfort and solace. This course will describe the evolution of tree cover in Ireland, with reference to individual tree species including the oak, ash, yew, birch and willows. The course will also illustrate their historical importance through exploring the role of trees in society, and how they are part of our cultural heritage. Their association to myths and legends will be described and discussed. Furthermore, the course will explore the pivotal role of trees in the biological community of the woodland, from the ground flora to the bird species. This will include practices in the creation of living woodlands and to their protection and enhancement.

This class will take place on QUB campus

Rewilding: Breathing New Life into Conservation

OLE3369

Roy Nelson, PhD

Fee £25.00 (concession rate £20.00)

New Year 2026

Half-day workshop on Saturday 21 February, 2.00 pm to 5.00 pm

The natural environment is under extreme pressure and many living organisms are struggling to survive. This can be observed both locally and nationally. Many of our animals and plants are threatened and are now on the brink of extinction or have become locally extinct. In Northern Ireland the corncrake is almost absent, and the curlew rarely heard. Red squirrels can be found in some small pockets of woodland, but their long-term survival is in the balance. Many plants such as those associated with wildlife meadows are disappearing from memory. Many of the approaches that have been taken in the past such as the creation of parks and woodlands have not been able to prevent the continued decline of our wildlife. Rewilding aims to restore and enhance damaged ecosystems and is a progressive approach to conservation. It blends scientific insights and practical innovations that help revive the ecological balance between animals and plants thus creating areas of rich biodiversity. Rewilding will be discussed, using examples from across the globe that exemplify the myriad of benefits that accrue from this radical approach. The approaches discussed can be adopted, whether it is in the garden, or on larger areas such as farmland and woodland.

This class will take place on QUB campus



The CAPNI Introduction to the Practice of Archaeology in Ireland. An Illustrated Lecture Series

OLE3352

Tutors from Centre for Community Archaeology, QUB

Fee £50.00 (concession rate £40.00)

Autumn 2025

10 weekly sessions on Wednesdays 1.00 pm to 2.00 pm, starting 1 October

This course will be delivered by archaeologists from the Centre for Community Archaeology, Queen's University Belfast as part of the Community Archaeology Programme Northern Ireland (CAPNI), supported by The National Lottery Heritage Fund, thanks to National Lottery players. This fully illustrated lecture series will cover the Practice of Archaeology in Ireland. Topics covered will include Ancient DNA, Recording the Past on Excavations, Artefacts, Vernacular Architecture, Buildings Archaeology, Maps and Surveying, the Science of Archaeology, Industrial Archaeology, and Maritime archaeology. The lecture series will be delivered in a hybrid format. People can either attend the classes in person or attend remotely. Reading lists for the various lectures and the individual lectures themselves will also be put up on Canvas after they have been delivered. (Our 2025/2026 CAPNI Introduction to the Practice of Archaeology in Ireland is a stand alone course but also acts as a complement to our 2024 CAPNI Introduction to the Archaeology of Ulster course.

This class will take place on QUB campus

Woodland: A Hidden Wealth of Wildlife

OLE3246

Roy Nelson, PhD

Fee £50.00 (concession rate £40.00)

Autumn 2025

5 weekly sessions on Tuesdays 2.00 pm to 4.00 pm, starting 23 September

A larger variety of plants and animals live in woodland than in any other part of the countryside and surveys of the woodlands' flora and fauna have revealed a complex web of relationships through which they live together. The woodland can be divided into layers, each revealing its own unique group of organisms. Many species live their whole life at one level, but many traverse between layers. These layers include the subsoil and soil, ground or field level, shrub or lower canopy, and finally the tree canopy. This course will investigate these unique habitats, using examples of the web of life that exist in woodlands of all ages and at all levels. The course will also provide practical advice on how to establish and help to maintain this diversity in small urban gardens through to larger tracts of woodland.

This class will take place on QUB campus



Practical First Aid**Red Cross**

Fee £50.00 (concession rate £40.00)

5 weekly sessions

Autumn 2025**Group 1** OLE0276Wednesdays 7.00 pm to 9.00 pm,
starting 24 September**New Year 2026****Group 2** OLE0278Wednesdays 7.00 pm to 9.00 pm,
starting 21 January

This 5-week first aid course will focus on adult casualties including: unresponsive casualties; CPR and recovery position; monitoring a casualty; choking; shock; bleeding and bandaging – cuts to limbs, object in a wound and minor bleeding – splinters, minor cuts, nosebleeds; burns; seizures; fainting; broken bones, dislocations, strains and sprains; heart attacks; diabetic emergency; poisoning; head injuries. Students must attend all sessions to attain a Red Cross Certificate.

These classes will take place in QUB campus

A Deadly Rivalry: A History of Franco-German Conflict and Eventual Partnership

OLE3387

Samuel Thompson, BA

Fee £100.00 (concession rate £80.00)

Autumn 2025**10 weekly sessions on Tuesdays 7.00 pm to 9.00 pm, starting 30 September**

Between the French revolution in 1789 and 1945, France was at war with a German or German-led state on at least twelve occasions. This perennial struggle led to the eventual demise of both as world powers. The course, while concentrating on the period 1870-1945, also examines the periods before and afterwards with the eventual outcome of partnership and leadership within the European Union, exemplified by the symbolic holding of hands by Chancellor Kohl and President Mitterand at Verdun in 1984. Central to the course is the theme of rising and declining powers and why that dynamic leads so often to war and what role we may expect of the two countries collectively and individually in the 21st century.

This class will take place on QUB campus

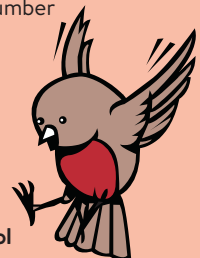
Early Bird . . .

We make the decision on whether or not to run a course seven days before the course start date, based on whether we have reached the minimum number of enrolments.

So please help us to help you!

Enrolments will close one week before classes are due to start.

Be an early bird and enrol well in advance!



Be an early bird and enrol well in advance



A History of Modern Britain, Part 8: Early Victorian Britain, 1837-1857

OLE3395

Ronnie Hanna, BA, MA

Fee £100.00 (concession rate £80.00)

Autumn 2025

10 weekly sessions on Wednesdays 2.00 pm to 4.00 pm, starting 24 September

Part 8 of a History of Modern Britain covers the first twenty years of the Victorian era, which saw the country continue to advance economically - celebrated in the Great Exhibition of 1851 - but also experience political unrest as the Chartists campaigned for male suffrage and the secret ballot. The outstanding political personality of the time, Robert Peel, led the struggle to repeal the Corn Laws, but in the process, bitterly divided the Conservative Party and consigned it to almost twenty years in the political wilderness. Two lectures will be devoted to the 'Golden Age' of English literature (one for prose and one for poetry), in which class participation will be invited.

This class will take place on QUB campus

'Really enjoyed it. Ronnie has put a lot of thought into this course looked forward every week to attending'

A History of the Labour Party -
Ronnie Hanna

A History of the USA, Part 7: The Progressive Era, 1900-1920

OLE3396

Ronnie Hanna, BA, MA

Fee £100.00 (concession rate £80.00)

Autumn 2025

10 weekly sessions on Tuesdays 2.00 pm to 4.00 pm, starting 23 September

The seventh part of the History of the USA series will cover the first two decades of the twentieth century, when a serious attempt was made to transform the nation politically and socially, matching the economic and commercial progress that had already been made. Two of the leading 'progressives' were the presidents who book-end this study: Theodore Roosevelt and Woodrow Wilson, 'founding fathers', you might say, of the modern American presidency. These decades also see the beginning of the 'Great Migration' of African Americans from the South into the rest of the nation and of US involvement in the First World War. The securing of female suffrage was perhaps the greatest achievement of the Progressive Era, but it also marked its end - at least for a time.

This class will take place on QUB campus

Early Bird . . .

We make the decision on whether or not to run a course seven days before the course start date, based on whether we have reached the minimum number of enrolments.

So please help us to help you!

Enrolments will close one week before classes are due to start.

Be an early bird and enrol well in advance!



Belfast's Slavery Past, 1613-1866**OLE3245****Tom Thorpe, BA, MA, PhD****Fee** £100.00 (concession rate £80.00)**New Year 2026****10 weekly sessions on Wednesdays 7.00 pm to 9.00 pm, starting 21 January**

This course explores Belfast's involvement in the international transatlantic slave trade and its role as a centre of abolitionist agitation. It firstly examines how Belfast's merchant classes in the mid-18th century were involved in trade with the slave plantations in the West Indies. The course then examines how, by the 1790s, the city became increasingly known as a centre of radical thought fighting against the slave trade and the institution of slavery. The city hosted former slaves like Olaudah Equiano in 1791 and 'fugitive slaves' like Frederick Douglass and Samuel Ringgold Ward in the middle of the 19th century. Once slavery had been abolished in the British Empire in the 1830s, Belfast campaigners turned their energies to campaigning against slavery in the southern States of the USA.

This class will take place on QUB campus

"Big House" in Ireland – North and South**OLE3439****Gerry Cleary, PhD****Fee** £100.00 (concession rate £80.00)**New Year 2026****10 weekly sessions on Mondays 7.00 pm to 9.00 pm, starting 19 January**

Most counties in Ireland still have their fair share of country houses popularly known as "Big Houses". They have played a key role in Irish history since the Norman conquest of the 12th century. But what are their origins and why did they play such an important role in Ireland's political, cultural and artistic evolution?

The predecessors of our "Big Houses" were fortified dwellings and strong castles. From the beginning of the 17th century they evolved into physical symbols of the new English order in post-Gaelic Ireland. As the immediate need for defensive fortification declined by the 18th century many "Big Houses" were transformed into architectural masterpieces from which the Protestant Irish Ascendancy could wield power over the local population.

Not all big houses were the preserve of the privileged gentry. Many of the new Industrial Revolution merchant princes (especially in Ulster) mimicked their culture with relish. This is perhaps best exemplified by the "Linen Big Houses" of The Lagan Valley.

Generally, by the start of the 20th century the importance and influence of the "Big Houses" declined. This course will trace the history and splendour of the "Big Houses" and will attempt to explain why so many have survived for so long, and analyse the reasons for their decline.

This class will take place on QUB campus



Builders of Central Belfast , Part 1: A Walking Tour

OLE1527

Gerry Cleary, PhD**Fee** £25.00 (concession rate £20.00)**Autumn 2025****Half-day walking tour on Saturday
25 October, 9.30 am to 1.30 pm**

Belfast's rise in the 19th and 20th centuries from a small market town to a major industrial city was accompanied by a remarkable architectural heritage reflected in a collection of iconic city centre buildings. This walking tour will examine some of the best examples of these and tell the stories of their "builders" (developers, architects and contractors). We start at Clifton House [1774] and finish at St Malachy's Roman Catholic Church in Alfred Street. We will take in St Anne's Cathedral; the Central Library; the Art Deco former Bank of Ireland; the hidden little Art Deco gem of the former Burton's Menswear Building in Ann Street; the Edwardian exuberance of Castle Buildings in Castle Place; the former Robinson and Cleaver's Building; the monumental Scottish Provident Institute and the classic late Georgian May Street Presbyterian Church built for the Rev. Henry Cooke in 1829. Where possible access will be gained to the interiors of some of the more iconic buildings. There is a small entrance fee for admission to St Anne's Cathedral.

Meeting Point: outside Clifton House,
2 Clifton Street [BT15 1ES]

Builders of Central Belfast, Part 2: A Walking Tour

OLE1736

Gerry Cleary, PhD**Fee** £25.00 (concession rate £20.00)**Autumn 2025****Half-day walking tour on Wednesday
8 October, 9.30 am to 1.30 pm**

The growth of Belfast was accompanied by the evolution of a remarkable architectural heritage, reflected in a collection of iconic city centre buildings. This tour will examine the stories of their "builders" (developers, architects and contractors). We start at the Royal Belfast Academical Institute (Inst) on College Square South and then take in the Old Museum Building which houses the Belfast Natural History and Philosophical Society and Ulster Architectural Heritage; the former Athletic Stores; the restored Bank Buildings; the former Robinson and Cleavers Building; the Scottish Provident Building and Ocean Buildings in Donegall Square; the former Burton's Menswear Building in Anne Street and the exuberant Albert Clock and Customs House Square. We finish up at the late Regency St. George's Church of Ireland in High Street, built on the site of the "Ecclesia de Alba-vaddo" (the white ford) at the very heart of the original Belfast settlement in the early Middle Ages. Where possible access will be gained to the interiors of some of the more iconic buildings. The walk will be about 2 - 3 miles around the city centre.

Meeting point: at the College Square South entrance of Inst [BT1 6DL]



Builders of West Belfast, Part 1: A Walking Tour

OLE1789

Gerry Cleary, PhD**Fee** £50.00 (concession rate £40.00)**Autumn 2025**

**One-day walking tour on Saturday
11 October, 10.00 am to 4.00 pm**

West Belfast evolved in the 19th Century from farmland and country estates to a townscape of industrial sites and associated mixed income house interspersed with relics of its middle-income past. We will attempt to trace the course of the now largely covered Farset River which was the *raison d'être* for the cluster of over 16 linen related factories and mills in this area, visiting sites of this activity. Who were the builders (architects, construction firms and developers)? Who were responsible for this industrial structure and their associated housing stock? We travel along Divis Street and the Falls Road and into the Clonard district finishing in the Beechmount area. There will be a lunch opportunity (not included in the fee) in the Conway Community Enterprises Centre in the former Conway Mill.

Meeting Point: Meet at the Queen's Street Falls Road bus route start.

Call the Midwife! A Brief History of Pregnancy and Childbirth

OLE3339

Robyn Atcheson, BA, MA, PhD**Fee** £25.00 (concession rate £20.00)**New Year 2026**

**Half-day workshop on Saturday 31 January,
10.00 am to 1.00 pm**

For fans of "Call the Midwife", medical history enthusiasts and anyone who wants to learn more, this half-day course provides an insight into pregnancy and childbirth throughout history. The class will look at ancient Greek and Roman ideas about pregnancy through to the myths and realities about midwives in the Middle Ages. While focusing on Britain and Ireland, the course will also examine European influences and how medical science began to take an interest in the traditionally female-only practice before the medicalisation of childbirth in the eighteenth and nineteenth centuries. We will use contemporary sources to see what people believed and how they experienced pregnancy and childbirth and see what midwives were really like throughout history.

This class will take place on QUB campus

'Robyn is so enthusiastic about her subject. She held everyone's attention throughout and answered all questions. She had props to help. Her classes are always utterly enjoyable.'

Call the Midwife! A Brief History of
Pregnancy and Childbirth – Robyn
Atcheson



Crowns, Coups and Courage: The Tudor Queens of England

OLE3137

Robyn Atcheson, BA, MA, PhD

Fee £100.00 (concession rate £80.00)

New Year 2026

10 weekly sessions on Thursdays 7.00 pm to 9.00 pm, starting 22 January

This course looks at the Tudor queens in depth, from Elizabeth of York to Elizabeth I through all six of Henry VIII's wives. We will examine their lives, their reigns and the scandals they attracted. It will examine why female rule was so resisted and look at the legacies of the first Queens regnant, including one who reigned for nine days.

This class will take place on QUB campus

'Gott strafe England'

OLE3397

Steve Flanders, BA, MA, PhD

Fee £100.00 (concession rate £80.00)

New Year 2026

10 weekly sessions on Thursdays 7.00 pm to 9.00 pm, starting 22 January

A history of World War One from the perspective of the Central Powers: Imperial Germany, the Austro-Hungarian Empire and the Ottoman Empire. Demonized as the countries that started the first global conflict, the apparent perspectives of these combatants was, and has been, the subject of propaganda, misinformation and misunderstanding. This course aims to broaden knowledge of the First World War by examining what motivated Germany and its allies to undertake such a disastrous action, and the campaigns which they fought to achieve those aims. It will present a different viewpoint to our traditional perception of the events of 1914-18.

This is a live online course



**Two ways to access the
Open Learning website.**

Either type in **www.qub.ac.uk/ol**
or scan the
QR code above.



History of India 1: The Indus Valley to the Moghul Empire

OLE3399

Steve Flanders, BA, MA, PhD

Fee £100.00 (concession rate £80.00)

New Year 2026

10 weekly sessions on Fridays 10.00 am to 12.00 noon, starting 23 January

Commencing with the ancient civilisation centred on the cities of Mohenjo-Daro and Harappa, this course will trace Indian history from the latter part of the last Ice Age forward almost 13,000 years to medieval India and the rise of the Moghul empire. Looking at the development of Vedic society with the influx of Aryans into north-east India, it will move on to the Achaemenid and Maury empires, through the classical period to the rise of Islam. (Part 2: The Moghul Empire to Independence, will be offered in Autumn 2026).

This is a live online class

Introduction to the Archaeology of Greece

OLE3426

Aikaterini (Katerina) Kolotourou, BA, PhD

Fee £100.00 (concession rate £80.00)

Autumn 2025

10 weekly sessions on Fridays 2.00 pm to 4.00 pm, starting 26 September

This course introduces the archaeology, culture, and society of the Greek world from the Late Bronze Age (c. 1600-1125 BC) through to the Hellenistic period and the aftermath of Alexander the Great's empire (c. 323-31 BC). Through the lens of artworks, architecture, and other material remains, we will examine the development of Greek communities and their societal, cultural, and political/ideological changes across time. Major themes will include the Minoan/ Mycenaean palatial culture of the Bronze Age, the emergence of the city-states (the Greek polis) in the Iron Age, Greek interactions with other cultures, the role of sanctuaries, burial, household, and identity.

This class will take place on QUB campus

Early Bird ...

We make the decision on whether or not to run a course seven days before the course start date, based on whether we have reached the minimum number of enrolments.

So please help us to help you!

Enrolments will close one week before classes are due to start.

Be an early bird and enrol well in advance!



Be an early bird and enrol well in advance



Israel/Palestine and The Middle East**OLE3336****Gerry Cleary, PhD****Fee** £100.00 (concession rate £80.00)**New Year 2026****10 weekly sessions on Fridays 2.00 pm to 4.00 pm, starting 23 January**

The current conflict in Israel/Palestine has deep tangled roots and the prospects of a lasting just peace remain elusive. The course will examine the origins and underlying causes behind the dreadful events which have blighted the Middle East in recent years. The Middle East has played a critical role in the development of our Western Civilisation past and present. The three main monotheistic religions - Judaism, Christianity and Islam have their origins there - and yet, the region has also been a cockpit of conflict for over 3,000 years right up to the present day. The course will attempt to explain this dichotomy and to offer some hope for the future (???). The tutor will draw on his personal experiences of the region to try to explain and illustrate the true nature of its problems.

This class will take place on QUB campus

‘The course was excellent. I would highly recommend it. Gerry has a wonderful way of imparting information.’

Israel/Palestine and the Middle East -
Gerry Cleary

Love in the Time of Jane Austen**OLE3418****Robyn Atcheson, BA, MA, PhD****Fee** £25.00 (concession rate £20.00)**Autumn 2025****Half-day session on Saturday 15 November, 10.00 am to 1.00 pm**

2025 marks the 250th anniversary of the birth of Jane Austen. Her works and their adaptations give a glimpse into Regency society and the conventions of love and courtship. This half-day workshop delves into the history of love, marriage and sex in this period in England. It will place classics like *Pride and Prejudice* and more recent hits like *Bridgerton* into their historical context. Through looking at contemporary sources, the class will discover the reality of courting, elopements, seductions, marriages and even what happened “between the sheets”. We will also look at why the Austen concept of romance and marriage still endures and how her legacy continues centuries later.

This class will take place on QUB campus



Napoleon**OLE1801****Steve Flanders, BA, MA, PhD****Fee** £100.00 (concession rate £80.00)**Autumn 2025****10 weekly sessions on Fridays 10.00 am to 12.00 noon, starting 26 September**

A biographical history of the most influential conqueror of Europe of the late 18th and early 19th centuries, including an examination of his life, relationships, campaigns and political career. Hated by Britain, and eventually defeated by a massive alliance, Napoleon nevertheless had an extraordinary impact on the development of modern Europe. This is his story.

This is a live online course

Plagues and Pox: Medicine and Society in Early Modern Britain and Ireland**OLE2842****Robyn Atcheson, BA, MA, PhD****Fee** £100.00 (concession rate £80.00)**Autumn 2025****10 weekly sessions on Tuesdays 7.00 pm to 9.00 pm, starting 23 September**

If you've ever wondered how syphilis was treated before the discovery of antibiotics, why no one really understood what happened during pregnancy and childbirth or just how people in the past managed to survive the plague, this course explains all of these and more. It looks at common illnesses, the controversial study of human anatomy and the sometimes gruesome treatments used to cure or treat various maladies. By considering how health and sickness affected the lives of those living from the sixteenth century to the turn of the nineteenth century, we will discover how physicians, patients and society in general responded to medicine. This course will consider how people understood their own bodies, how society reacted to the threats of disease and how medical knowledge evolved over time.

This class will take place on QUB campus



**Two ways to access the
Open Learning website.**

Either type in **www.qub.ac.uk/ol**
or scan the
QR code above.



Richard Nixon: A Life in Politics**OLE3412****Ronnie Hanna, BA, MA****Fee** £100.00 (concession rate £80.00)**Autumn 2025****10 weekly sessions on Wednesdays 11.00 am to 1.00 pm, starting 24 September**

On his last night in the White House, Richard Nixon reminisced with Henry Kissinger about the triumphs – and, of course, the trials and tribulations – of the previous five and a half years. Nixon, not surprisingly, was in a sombre mood, and in an attempt to lift his spirits, Kissinger assured him that history would judge him to be one of the great presidents. ‘That depends,’ Nixon replied, ‘on who writes the history.’ He was right. This course takes a fresh and in-depth look at one of the most controversial presidents of the twentieth century, who was forced to resign from office in disgrace in 1974 and yet who achieved some of the most spectacular successes in foreign policy in America’s history.

This class will take place on QUB campus

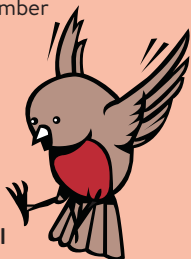
Early Bird ...

We make the decision on whether or not to run a course seven days before the course start date, based on whether we have reached the minimum number of enrolments.

So please help us to help you!

Enrolments will close one week before classes are due to start.

Be an early bird and enrol well in advance!

**Russia-Ukraine Conflict in Context****OLE3430****Angela Hunt, BA, MA, MIR, MCIL****Fee** £100.00 (concession rate £80.00)**Autumn 2025****10 weekly sessions on Wednesdays 6.00 pm to 8.00 pm, starting 24 September**

In February 2022, Russia’s full-scale invasion of Ukraine sent shockwaves across Europe, prompting EU member states to stand united and take unprecedented political and financial measures to constrain the Kremlin. As the war in Ukraine continues unabated, many questions remain regarding the rationale behind President Vladimir Putin’s attack on Ukraine—a conflict that effectively began with Russia’s annexation of Crimea in 2014. After the collapse of the Soviet Union in 1991, the successor states’ bilateral relations have undergone periods of ties, tensions, and outright hostility. Relations between Russia and Ukraine became hostile after the 2014 Ukrainian revolution, which was followed by Russia’s annexation of Crimea from Ukraine, and the war in Donbas, in which Russia backed the separatist fighters of the Donetsk People’s Republic and the Luhansk People’s Republic. This course will analyse the roots of Ukrainian Russian relations dating back to the formation of the Russian State. Kiev, the capital of modern Ukraine, was proclaimed the mother of Rus Cities, as it was the capital of the powerful late medieval state of Rus.

This class will take place on QUB campus



Technowar**OLE3168****Steve Flanders, BA, MA, PhD****Fee** £100.00 (concession rate £80.00)**Autumn 2025****10 weekly sessions on Thursdays 7.00 pm to 9.00 pm, starting 25 September**

World War One saw the deployment of new military technology on an industrial scale for the first time. This course traces the development and deployment of ten technologies which fundamentally changed the nature of war and led to the massive loss of life in the 1914-18 conflict. It will look at explosives, Dreadnoughts, torpedoes and submarines, railways, machine guns, poison gas, aircraft and zeppelins, motorised transport, radio and communications, and tanks.

This is a live online course

‘This was another of Steve’s exceptional courses. Fabulous delivery. I’d be unable to attend in person so am thrilled to be able to access Steve’s wonderful courses online. Thank you’

Victoria’s Wars – Steve Flanders

Ten Radical Belfast Women**OLE3417****Robyn Atcheson, BA, MA, PhD****Fee** £100.00 (concession rate £80.00)**Autumn 2025****10 weekly sessions on Thursdays 7.00 pm to 9.00 pm, starting 25 September**

Belfast’s history is full of women who refused to conform to society’s expectations. This course delves into the lives of these women and how they changed the world around them. Each week we will look at one remarkable woman and explore the issues she cared about. Not only will you learn more about these individual lives but you will also gain a wider understanding of life in nineteenth-century Belfast and beyond. This course uses contemporary sources to recreate the often-hidden lives of women. It will also look at the circumstances within Belfast which offered such an abundant ground for radical women and their ideas.

This class will take place on QUB campus
No class on Thursday 6 November



The Fight for the Falklands**OLE3422****Ronnie Hanna, BA, MA****Fee** £100.00 (concession rate £80.00)**New Year 2026****10 weekly sessions on Tuesdays 2.00 pm to 4.00 pm, starting 20 January**

On 2 April 1982, Argentina invaded the Falkland Islands, known to the Argentinians as the Malvinas. And so began a war that seemed totally out of place in the late twentieth century - a 'colonial war', as many saw it, long after the age of empire; a war outside the parameters of the Cold War, fought indeed between allies of the United States. But first, many questions had to be answered. Could diplomacy avert bloodshed? Did Britain have the political will to fight? Could Britain's armed forces dislodge the Argentinian garrison before the onset of the South Atlantic winter? This course will explain the answers to those questions and analyse the diplomacy, politics and armed conflict involved in the fight for the Falklands.

This class will take place on QUB campus
No class on Tuesday 17 March

The Medieval Church**OLE3398****Steve Flanders, BA, MA, PhD****Fee** £100.00 (concession rate £80.00)**New Year 2026****10 weekly sessions on Wednesdays 10.00 am to 12.00 noon, starting 21 January**

An examination of the medieval church of Latin Christendom from its earliest days as the diocese of Rome to its most powerful position during the Renaissance. While looking at the papacy – including some colourful popes – and the way it interacted with the medieval world, the course will consider the Church's power, structure, patronage and military campaigns. It will also look at associated topics ranging from heresy, pilgrimage and organisation to benefices and 'Rome runners'. Although reflecting on 1,500 years of history, the course will be thematic so as to give a rounded assessment of this most enduring of medieval institutions.

This is a live online course

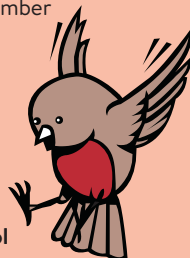
Early Bird . . .

We make the decision on whether or not to run a course seven days before the course start date, based on whether we have reached the minimum number of enrolments.

So please help us to help you!

Enrolments will close one week before classes are due to start.

Be an early bird and enrol well in advance!



The Norman Invasion of Ireland**OLE3391****Steve Flanders, BA, MA, PhD****Fee** £50.00 (concession rate £40.00)**Autumn 2025****5 weekly sessions on Wednesdays 10.00 am to 12.00 noon, starting 24 September**

The Normans radically changed the history of Ireland in the 12th century. The battle of Hastings of 1066 put William the Conqueror on the English throne. Almost exactly a century later, disputes within the Irish kingdom of Dermot MacMurrough led to Norman intervention which quickly escalated into claims over the whole of Ireland. We'll look at the principal factors in these developments, trace their history, and consider the virtually independent principality of John de Courcy in Ulster.

This is a live online course

The Second World War, Year by Year: 1941: Annihilation**OLE3428****Ronnie Hanna, BA, MA****Fee** £100.00 (concession rate £80.00)**New Year 2026****10 weekly sessions on Wednesdays 2.00 pm to 4.00 pm, starting 21 January**

As the war entered its third calendar year, fighting would continue in North Africa; the Battle of the Atlantic would continue to be waged, at increasing cost to Britain; and the Blitz, which had begun in the autumn of 1940, would intensify in the early months of 1941. The conflict, however, would also spread to new areas - to Yugoslavia, for example, and then to Greece, where Italy had already been waging an unsuccessful campaign that would now be transformed by German intervention. In terms of a widening war, two episodes stand out above all others, namely the German invasion of the USSR in June and the Japanese attack on the US naval base at Pearl Harbor in December. With the Soviet Union and America now involved, the war assumed a colossal quality it had not had before.

This class will take place on QUB campus



**Two ways to access the
Open Learning website.**

Either type in **www.qub.ac.uk/ol**
or scan the
QR code above.



The Social History of Belfast and its Residents, 1798-1914

OLE3039

Tom Thorpe, BA, MA, PhD

Fee £100.00 (concession rate £80.00)

Autumn 2025

10 weekly sessions on Wednesdays 7.00 pm to 9.00 pm, starting 1 October

This course examines the social history of Belfast residents and how their lived experience was shaped by changes to the political, statutory, economic, demographic, local government and built environment of Belfast between the 1798 rising of the United Irishmen to the outbreak of the First World War. The course covers one theme each week. These are:

1. Crime and punishment.
2. Religion and church attendance.
3. Party politics, the expanding franchise and national issues.
4. The world of work and the industrial revolution.
5. The rise of the labour movement.
6. Local government and welfare.
7. Leisure, pastimes and hobbies.
8. Education, training and employment.
9. Disease, illness and public health.

This class will take place on QUB campus

The Tories: The Conservative Party in the Twentieth Century

OLE3406

Ronnie Hanna, BA, MA

Fee £100.00 (concession rate £80.00)

New Year 2026

10 weekly sessions on Wednesdays 11.00 am to 1.00 pm, starting 21 January

The twentieth century started badly for the Conservatives, with a crushing defeat in the 1906 general election, but the Great War brought them back into government and then the party dominated the interwar years. Full democracy, which Britain achieved in 1928 (under a Tory government), was expected to finish off the Conservatives as a serious political force, but they have made a virtue of adapting to changing circumstances. The course will consider the party's policies, but also its personalities - from Baldwin and Churchill to Powell and Thatcher.

This class will take place on QUB campus

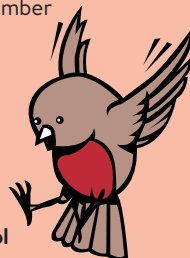
Early Bird . . .

We make the decision on whether or not to run a course seven days before the course start date, based on whether we have reached the minimum number of enrolments.

So please help us to help you!

Enrolments will close one week before classes are due to start.

Be an early bird and enrol well in advance!



Thomas Becket: Turbulent Priest**OLE3449****Steve Flanders, BA, MA, PhD****Fee** £50.00 (concession rate £40.00)**Autumn 2025****5 weekly sessions on Wednesdays 10.00 am to 12.00 noon, starting 29 October**

Everyone knows that Thomas Becket, archbishop of Canterbury, was murdered near the high altar of his cathedral by four knights from the royal court of King Henry II. But his extraordinary martyrdom was the culmination of a lengthy career in royal service and many years of close friendship with the king. Yet, once ordained archbishop, that career and friendship were shattered by a series of disputes between England's most senior cleric and the first Plantagenet king. By exploring Thomas's life and relationships this short course will follow the long and twisting path which led to such a brutal act in Christ Church, Canterbury, and why the archbishop's ultimate bloody demise became all but inevitable.

This is a live online course

Ulster in the Nineteenth Century**OLE3423****Robyn Atcheson, BA, MA, PhD****Fee** £100.00 (concession rate £80.00)**New Year 2026****10 weekly sessions on Tuesdays 7.00 pm to 9.00 pm, starting 20 January**

The nineteenth century saw huge changes across Ireland. Population changes were shaped by events such as the Great Famine and the rise of emigration. Religious changes took place in both the Roman Catholic and Protestant churches. Politics changed drastically and political participation involved every class within society. Women's lives were radically altered while the class divisions within society were strengthened and enforced. This course looks at the events of this turbulent century in the province of Ulster. It will ask questions like did Ulster experience key events any differently than the rest of Ireland? How did Ulster go from the United Irishmen of 1798 to the staunch unionists of the 1880s and 1890s? We will answer these questions by examining contemporary sources to uncover the political, religious and social history of Ulster.

This class will take place on QUB campus
No class on Tuesday 17 March



**Two ways to access the
Open Learning website.**

Either type in **www.qub.ac.uk/ol**
or scan the
QR code above.





Language Courses (Guide to Levels)

Level	Suggested entry requirement	What should I have learnt by the end of the year
Beginners'	<ul style="list-style-type: none"> No prior knowledge required 	<ul style="list-style-type: none"> Introduce themselves Ask and answer others about their jobs, family and interests Understand simple questions and instructions Understand and use basic grammar structures
Lower Intermediate	<ul style="list-style-type: none"> Students have completed Beginners or equivalent course at another institution Students can use and understand simple phrases and sentences on familiar topics 	<ul style="list-style-type: none"> Improve spoken and written skills; i.e. expressing simple opinions/requirements in a familiar context; e.g. shopping, ordering a meal, booking a room Understand and use relevant grammatical rules Improve understanding of the language Communicate and interact at relevant level; i.e. survival language skills for everyday needs
Intermediate	<ul style="list-style-type: none"> Students have completed Lower Intermediate or equivalent course at another institution Students can deal with most situations likely to arise whilst travelling and can describe experiences, events, plans and hopes Students have survival skills for everyday needs 	<ul style="list-style-type: none"> Use more complex oral structures; e.g. start, and maintain, a simple face-to-face conversation on topics of personal interest Understand the language on a higher level; eg understand main points in short articles about familiar topics Read different types of text and appreciate different styles Engage in discussions both orally and in written form Students will have reached approximately GCSE/NVQ Level 1



Language Courses (Guide to Levels)

Level	Suggested entry requirement	What should I have learnt by the end of the year
Upper Intermediate	<ul style="list-style-type: none"> Students who have completed Intermediate level or equivalent course at another institution Students who have a very good knowledge of the language at an intermediate level 	<ul style="list-style-type: none"> Show a good command of all verb tenses with a focus on the subjunctive Use confidently some work place and business related vocabulary
Language Club, Intermediate	<ul style="list-style-type: none"> Students who have completed Upper Intermediate or equivalent course at another institution Students who have A level + language skills Students have lived in the country Students can follow/give a talk on a familiar topic or keep up a conversation on a fairly wide range of topics 	<ul style="list-style-type: none"> Use more complex oral structures; e.g. start, and maintain, a simple face-to-face conversation on topics of personal interest Read different types of text and appreciate different styles Engage in discussions both orally and in written form
Language Club Advanced	<ul style="list-style-type: none"> Students who have a diploma or degree level in the language or who have lived in the country 	<ul style="list-style-type: none"> Understand a wide range of demanding, longer texts, and recognise implicit meaning Express him/herself fluently and spontaneously without much obvious searching for expressions Use language flexibly and effectively for social, academic and professional purposes Produce clear, well-structured, detailed text on complex subjects, showing controlled use of organisational patterns, connectors and cohesive devices Understand and have the ability to discuss films, radio and TV news and programmes, both orally and in writing



French: Beginners' (10 weeks)**OLE0179****Alice Hagopian, BA, MLit****Fee** £100.00 (concession rate £80.00)**Autumn 2025****10 weekly sessions on Wednesdays 2.00 pm to 4.00 pm, starting 24 September**

This course is designed for absolute beginners. Whether you wish to learn the language for pleasure or work, this course will give you a sound knowledge of the basics of the language so that you will be able to communicate simply and effectively in everyday situations. All language skills (speaking, listening, reading, writing, grammar and vocabulary building) will be practised, with an emphasis on oral language.

This class will take place on QUB campus

French Lower-Intermediate/Intermediate**OLE0173****Julie Juret, MA****Fee** £200.00 (concession rate £160.00)**Autumn 2025****20 weekly sessions on Mondays 6.00 pm to 8.00 pm, starting 22 September**

This course is designed for learners who have survival skills in everyday needs and would like to improve their command of French communication. It is also aimed at students who have completed Lower Intermediate and wish to reach the Intermediate level. Conducted by a native French speaker and teacher in a relaxed and friendly atmosphere, this course will cover all language skills with an emphasis on oral language.

This class will take place on QUB campus

French False Beginners'/Upper Beginners'**OLE0171****Julie Juret, MA****Fee** £200.00 (concession rate £160.00)**Autumn 2025****20 weekly sessions on Thursdays 6.00 pm to 8.00 pm, starting 25 September**

This course is designed for students who have completed a first year of French language and for learners who have a basic understanding of French communication and grammar and would like to improve their conversation skills. Conducted by a native French speaker and teacher in a relaxed and friendly atmosphere, this course will cover all language skills with an emphasis on oral language. Students will be able to communicate simply and effectively in everyday situations and in particular for travel and holidays.

This class will take place on QUB campus

'Excellent course. The tutor put great effort into making it very enjoyable whilst covering essential elements of learning French.'

French: Lower Intermediate –
Julie Juret

Be an early bird and enrol well in advance



French: Lower Intermediate (10 weeks)**OLE3260****Hélène Guillet, MA, Maîtrise de Français
Langue Étrangère****Fee** £100.00 (concession rate £80.00)**New Year 2026****10 weekly sessions on Tuesdays 10.00 am to
12.00 noon starting 20 January**

This course is designed for students who have attended a French course recently and for students who have a basic understanding of French. Whether you wish to learn the language for pleasure or work, this course will give you a sound knowledge of the basics of the language so that you will be able to communicate simply and effectively in everyday situations. All language skills (speaking, listening, reading, writing, grammar and vocabulary building) will be practised, with an emphasis on oral communication.

This class will take place on QUB campus
No class on Tuesday 17 March



**Two ways to access the
Open Learning website.**

Either type in **www.qub.ac.uk/ol**
or scan the
QR code above.

French Conversation Club: Intermediate**OLE3259****Hélène Guillet, MA, Maîtrise de Français
Langue Étrangère****Fee** £100.00 (concession rate £80.00)**New Year 2026****10 weekly sessions on Wednesdays 10.00 am
to 12.00 noon, starting 21 January**

This course of 10 classes will focus on oral skills and help students develop their vocabulary and their confidence when speaking French. After the first class, each session will focus on a theme chosen by the students and will consist of activities tailored to improve communication in a relaxed atmosphere. Suitable for those with an intermediate level of French.

This class will take place on QUB campus

**French Conversation Club: Intermediate to
Advanced****OLE0176****Julie Juret, MA****Fee** £200.00 (concession rate £160.00)**Autumn 2025****20 weekly sessions on Wednesdays 6.00 pm
to 8.00 pm, starting 24 September**

This course is designed for students who have a good command of spoken and written language. The emphasis in class will be on the conversation, based on topic discussion, current affairs, arts and culture, French society. There will be plenty of opportunities and activities to cover other aspects of the language, such as reading, grammar, vocabulary building, listening.

This class will take place on QUB campus



French: Upper Intermediate**OLE3208****Brigitte Gourley, BA, MA, PhD****Fee** £150.00 (concession rate £120.00)**Autumn 2025****20 weekly sessions on Tuesdays 6.30 pm to 8.00 pm, starting 23 September**

This course is suitable for students who have a very good command of both the written and spoken language. Anyone with a good grasp of the language is also welcome. The emphasis in class will be on oral work. There will be plenty of opportunities for discussions and activities to revise the four skills: listening, speaking, reading and writing at this level. Topics and themes covered range from French culture to current affairs.

This class will take place on QUB campus
No class on Tuesday 17 March

French: Perfect Pronunciation**OLE1677****Hélène Guillet, MA, Maîtrise de Français
Langue Étrangère****Fee** £50.00 (concession rate £40.00)**New Year 2026****5 weekly sessions on Wednesdays 2.00 pm to 4.00 pm, starting 25 February**

Pronounce French with a real flair! In a fun and relaxed format, you will participate in special targeted exercises and readings to quickly enhance your language skills and vocabulary. Whether you have taken just a bit of basic French, studied it in college or spent loads of time trying to speak in France, you will immediately notice positive results and feel much more confident interacting with French native speakers.

This class will take place on QUB campus

French: Perfect Grammar**OLE1867****Hélène Guillet, MA, Maîtrise de Français
Langue Étrangère****Fee** £50.00 (concession rate £40.00)**New Year 2026****5 weekly sessions on Wednesdays 2.00 pm to 4.00 pm, starting 21 January**

This short course will suit students with an intermediate level of French. The first couple of sessions will focus on verbs (tenses and moods). The following three sessions will be tailor-made to answer students' questions and doubts raised on any aspect of French grammar. These workshops aim to tackle problems faced by foreign speakers of French, with an emphasis on common issues for English speakers.

This class will take place on QUB campus

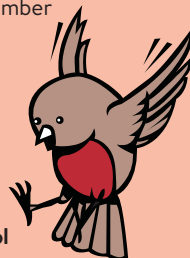
Early Bird . . .

We make the decision on whether or not to run a course seven days before the course start date, based on whether we have reached the minimum number of enrolments.

So please help us to help you!

Enrolments will close one week before classes are due to start.

Be an early bird and enrol well in advance!



Be an early bird and enrol well in advance



The French Club**OLE3429****Brigitte Gourley, BA, MA, PhD****Fee** £60.00 (concession rate £48.00)**Autumn 2025**

6 monthly sessions on Wednesdays 6.00 pm to 8.00 pm, (1 October, 22 October, 26 November, 21 January, 18 February, 25 March)

The Monthly French Club is an opportunity for its members to continue learning and improving their French language skills through literature, cinema and a selection of cultural activities. Club members will have the opportunity to engage in thoughtful discussions, improve their reading and oral comprehension, expand their vocabulary in context, enhance their speaking skills and gain cultural insights into French society while gaining confidence in French communication. Sessions will be held in French and an intermediate/upper intermediate level of French would be best suited to those attending the monthly 2-hour sessions. French Club focus: Group discussions; Reading of selected excerpts together/focus on fine-tuning text comprehension; film watching followed by discussion; cultural activities generating vocabulary enrichment through debate and discussion.

This class will take place on QUB campus

'Excellent course, delivered in a pleasant, relaxed environment. Has improved my oral French skills. Have already recommended it to others.'

French Conversation Club: Intermediate –
Hélène Guillet

German: Beginners'**OLE0306****Eva Dalton, BA****Fee** £200.00 (concession rate £160.00)**Autumn 2025**

20 weekly sessions on Mondays 7.00 pm to 9.00 pm, starting 22 September

This course is designed for beginners. Whether you wish to learn the language for pleasure or work, this course will give you a sound knowledge of the basics of the language so that you will be able to communicate simply and effectively in everyday situations. All language skills (speaking, listening, reading, writing, grammar and vocabulary building) will be practised, with an emphasis on oral language.

This class will take place on QUB campus

German: Beginners', (New Year)**OLE0293****Barbara Boyle, BA****Fee** £100.00 (concession rate £80.00)**New Year 2026**

10 weekly sessions on Wednesdays 7.00 pm to 9.00 pm, starting 21 January

This course is designed for beginners. Whether you wish to learn the language for pleasure or work, this course will give you a sound knowledge of the basics of the language so that you will be able to communicate simply and effectively in everyday situations. All language skills (speaking, listening, reading, writing, grammar and vocabulary building) will be practised, with an emphasis on oral language.

This class will take place on QUB campus



German: Lower Intermediate**OLE0235****Eva Dalton, BA****Fee** £200.00 (concession rate £160.00)**Autumn 2025****20 weekly sessions on Wednesdays 7.00 pm to 9.00 pm, starting 24 September**

This course is designed for students who have completed the Beginners' level in the Open Learning Programme or who have a good basic knowledge of the language. The course aims at improving oral competence and performance with some basic written work and will also present and discuss various aspects of life in the country.

This class will take place on QUB campus

German: Intermediate**OLE0180****Eva Dalton, BA****Fee** £200.00 (concession rate £160.00)**Autumn 2025****20 weekly sessions on Tuesdays 7.00 pm to 9.00 pm, starting 23 September**

This course is designed for students who have completed Lower Intermediate in the Open Learning Programme or who have a good command of the written and spoken language. All aspects of language learning will be taught and practised with the emphasis on the spoken word.

This class will take place on QUB campus
No class on Tuesday 17 March

German: Language Club, Intermediate**OLE0181****Mechthild Baxter, BA, PGCE****Fee** £200.00 (concession rate £160.00)**Autumn 2025****20 weekly sessions on Tuesdays 6.30 pm to 8.30 pm, starting 23 September**

This course is designed to bridge the gap between Intermediate and the Advanced Language Club in the Open Learning Programme. Anyone with a good grasp of the language is welcome. Some new grammar will be introduced, but the emphasis will be on widening the vocabulary and practising the language skills. There will be plenty of opportunities for discussions and activities to revise the four skills: listening, speaking, reading and writing at this level.

This class will take place on QUB campus
No class on Tuesday 17 March

German: Language Club, Advanced**OLE0182****Mechthild Baxter, BA, PGCE****Fee** £200.00 (concession rate £160.00)**Autumn 2025****20 weekly sessions on Wednesdays 6.30 pm to 8.30 pm, starting 24 September**

This course is designed for students with a very good command of the written and spoken language who wish to attain, improve or keep up their fluency in the spoken word. There will be plenty of opportunities to discuss and debate on topical issues, read up-to-date articles, watch films and short videos, revise grammar and improve your language skills.

This class will take place on QUB campus



Classical Greek: Language Club**OLE0921****Geraldine O'Neill, BA, MA, PhD****Fee** £200.00 (concession rate £160.00)**Autumn 2025****20 weekly sessions on Wednesdays 2.00 pm to 4.00 pm, starting 24 September**

If you are interested in ancient Greece, its language and literature, then you will enjoy this course. This year we will read two books from the 'Iliad', Book 16 where Patroclus is killed by Hector and Book 18 where Achilles grieves for Patroclus and is awarded a new set of armour before returning to the fighting. As well as dealing with translation and points of grammar, we will consider these two books within the context of Homer's poem as a whole.

Textbook: '*Reading Homer, Iliad* , Books 16 and 18'; Joint Association of Classical Teachers' Greek Course; C.U.P.[2023] '

This class will take place on QUB campus

Irish: Beginners'**OLE0537****Méabh McAuley, BA, PGCE****Fee** £200.00 (concession rate £160.00)**Autumn 2025****20 weekly sessions on Tuesdays 7.00 pm to 9.00 pm, starting 23 September**

This course is designed for complete beginners to the Irish language. It begins with a focus on pronunciation before moving on to covering simple vocabulary aimed at teaching you how to construct everyday conversations. This course will cover topics such as: myself, my family, the weather, jobs, hobbies, and making and describing plans. While it does not focus intensely on grammar, some elements will be incorporated naturally to facilitate your use of the language outside of the classroom setting.

This class will take place on QUB campus
No class on Tuesday 17 March

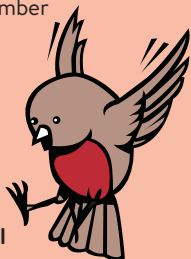
Early Bird ...

We make the decision on whether or not to run a course seven days before the course start date, based on whether we have reached the minimum number of enrolments.

So please help us to help you!

Enrolments will close one week before classes are due to start.

Be an early bird and enrol well in advance!



Advanced Irish Conversation**OLE0979****Maureen Hurndall, BA****Fee** £50.00 (concession rate £40.00)**New Year 2026****One-day workshop on Saturday 21 March,
10.00 am to 4.00 pm**

This course is for those with a good standard of Irish who wish to improve their conversational and other oral skills and improve their vocabulary in at least six areas. It will also help students to find the right register for persuasive speaking, debate and discussion and broadcasting. Grammar will be covered when and where it arises.

This class will take place on QUB campus

Italian: Refresher Course for Post-Beginners**OLE2969****Giada Mangiardi, BA, MA****Fee** £50.00 (concession rate £40.00)**Autumn 2025****Three x 2-hour sessions on Monday 15,
Wednesday 17 and Friday 19 September,
10.00 am to 12.00 noon**

You have studied Italian before but you are not quite sure you're ready for joining the Lower Intermediate level? You have the basics of the language but feel you need a little revision after the long summer? In this intensive 6-hour course we will revise some vocabulary, grammar topics and structures so that you regain your confidence in expressing yourself in Italian!

This class will take place on QUB campus

Italian: Beginners'**Fee** £200.00 (concession rate £160.00)**Autumn 2025****20 weekly sessions****Group 1** **OLE0183****Giada Mangiardi, BA, MA****Thursdays 10.00 am to 12.00 noon,
starting 25 September****Group 2** **OLE0185****Elena Bergia, PhD****Wednesdays 6.00 pm to 8.00 pm,
starting 24 September**

This course is designed for beginners. Whether you wish to learn the language for pleasure or work, this course will give you a sound knowledge of the basics of the language so that you will be able to communicate simply and effectively in everyday situations. All language skills (speaking, listening, reading, writing, grammar and vocabulary building) will be practised, with an emphasis on oral language.

These classes will take place on QUB campus



Italian Beginners (New Year)**OLE2134****Elena Bergia, PhD****Fee** £100.00 (concession rate £80.00)**New Year 2026****10 weekly sessions on Mondays 6.00 pm to 8.00 pm, starting 19 January**

This course is designed for beginners. Whether you wish to learn the language for pleasure or work, this course will give you a sound knowledge of the basics of the language so that you will be able to communicate simply and effectively in everyday situations. All language skills (speaking, listening, reading, writing, grammar and vocabulary building) will be practised, with an emphasis on oral language.

This class will take place on QUB campus

Italian: Lower Intermediate**OLE0380****Giada Mangiardi, BA, MA****Fee** £200.00 (concession rate £160.00)**Autumn 2025****20 weekly sessions on Thursdays 12.00 noon to 2.00 pm, starting 25 September**

This course is designed for students who have completed the Beginners' level in the Open Learning Programme or who have a good basic knowledge of the language. The course aims at improving oral competence and performance with some basic written work and will also present and discuss various aspects of life in the country.

This class will take place on QUB campus

Italian: Five Lesser-Known Venetian Islands**Federica Ferrieri, BA, PhD****Fee** £38.00 (concession rate £30.00)**5 weekly sessions****New Year 2026****Lower Intermediate** **OLE3402****Wednesdays 5.00 pm to 6.30 pm, starting 21 January****Intermediate and Advanced** **OLE3403****Wednesdays 6.30 pm to 8.00 pm, starting 21 January**

Journey through five lesser-known islands of the Venetian Lagoon while enhancing your Italian skills! This interactive course will bring their history, traditions, and unique character to life through engaging discussions, role play, quizzes, and creative activities. A perfect opportunity to deepen your understanding of both language and culture while exploring a different side of the most beautiful city in the world.

The same content will be used for both levels. In the lower intermediate class the language and activities will be more guided.

These classes will take place on QUB campus

'Brilliant teacher - her speed of verbal communication is chosen to suit the level of the class. Worksheets are very thoughtfully presented to get the best out of class time.'

Italian: Five Formidable Italian Women – Federica Ferrieri



Italian: Fables to Rewrite**Federica Ferrieri, BA, PhD****Fee** £38.00 (concession rate £30.00)**5 weekly sessions****Autumn 2025****Lower Intermediate** OLE3400**Wednesdays 5.00 pm to 6.30 pm,
starting 24 September****Intermediate and Advanced** OLE3401**Wednesdays 6.30 pm to 8.00 pm,
starting 24 September**

Step into the world of Cappuccetto Rosso, Cenerentola, and other beloved fables in Italian! This interactive, student-centred course will take a fresh look at traditional stories, exploring their language, themes, and cultural significance. Through engaging activities - including role play and quizzes - we'll reimagine these tales for today's world, challenging ourselves to think critically about representation, diversity, inclusion and restorative justice. A perfect blend of language learning and creative exploration, this course invites you to see Italian storytelling in a new light.

The same content will be used for both levels. In the lower intermediate class the language and activities will be more guided.

These classes will take place on QUB campus
No class on 15 October

Italian: Vocabulary Accelerator**OLE3413****Stefania Farone, BA, PhD****Fee** £75.00 (concession rate £60.00)**New Year 2026****10 weekly sessions on Thursdays 5.00 pm to
6.30 pm, starting 22 January**

Designed for pre-intermediate to intermediate students, "Vocabulary Accelerator" is your gateway to expanding your Italian vocabulary and boosting confidence in everyday communication. This dynamic and fun-packed course focuses on enriching your vocabulary through interactive methods, pronunciation and listening exercises and thematic vocabulary lessons covering travel, dining, daily life and more.

This class will take place in QUB campus

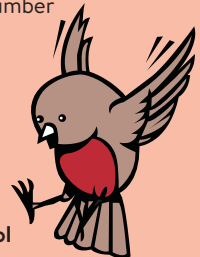
Early Bird . . .

We make the decision on whether or not to run a course seven days before the course start date, based on whether we have reached the minimum number of enrolments.

So please help us to help you!

Enrolments will close one week before classes are due to start.

Be an early bird and enrol well in advance!



Italian: Intermediate**OLE0189****Giada Mangiardi, BA, MA****Fee** £200.00 (concession rate £160.00)**Autumn 2025****20 weekly sessions on Wednesdays 1.00 pm to 3.00 pm, starting 24 September**

This course is designed for students who have completed Lower Intermediate in the Open Learning Programme or who have a good command of the written and spoken language. All aspects of language learning will be taught and practised with the emphasis on the spoken word.

This class will take place on QUB campus

Italian: Upper Intermediate**OLE3437****Maura Favetto, Laurea in Lingue, PGCE****Fee** £200.00 (concession rate £160.00)**Autumn 2025****20 weekly sessions on Tuesdays 2.00 pm to 4.00 pm, starting 23 September**

After building up the foundation structures of the language, it is time to polish our skills and enter the next level of communication and comprehension of “la bella lingua”. Through a series of new topics, real life situations and exciting readings and audio-visual material, the students will be able to finely tune their knowledge of the language and increase their confidence in conversation. There will also be room to accommodate requests regarding specific grammatical points or individual issues. Ci vediamo il martedì pomeriggio.

This class will take place on QUB campus
No class on Tuesday 17 March

Italian: Language Club**OLE0190****Maura Favretto, Laurea in Lingue, PGCE****Fee** £200.00 (concession rate £160.00)**Autumn 2025****20 weekly sessions on Tuesdays 7.00 pm to 9.00 pm, starting 23 September**

This is a bespoke course for the advanced enthusiasts of ‘La bella lingua’. Ideal for those who are interested in subjects ranging from literature, arts, current affairs, music, show business and much more. The course grows organically from topic to topic, through a range of reading, listening and visual material. There will also be ample space for spoken activity. Vi aspetto numerosi.

This class will take place on QUB campus
No class on Tuesday 17 March

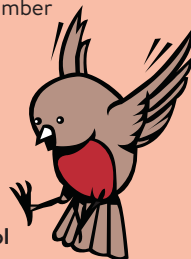
Early Bird . . .

We make the decision on whether or not to run a course seven days before the course start date, based on whether we have reached the minimum number of enrolments.

So please help us to help you!

Enrolments will close one week before classes are due to start.

Be an early bird and enrol well in advance!



Spanish: Beginners'

Fee £200.00 (concession rate £160.00)

Autumn 2025

20 weekly sessions

Group 1 OLE0194**Silvia Lamela, BA**Wednesdays 11.00 am to 1.00 pm,
starting 24 September**Group 2** OLE0195**Carolina Montané Franco, BA, MA**Thursdays 6.00 pm to 8.00 pm,
starting 25 September

This course is designed for beginners. Whether you wish to learn the language for pleasure or work, this course will give you a sound knowledge of the basics of the language so that you will be able to communicate simply and effectively in everyday situations. All language skills (speaking, listening, reading, writing, grammar and vocabulary building) will be practised, with an emphasis on oral language. Materials provided. Textbook will be discussed at the first class.

These classes will take place on QUB campus

Spanish: Beginners', (New Year)

Fee £100.00 (concession rate £80.00)

New Year 2026

10 weekly sessions

Group 1 OLE0205**Silvia Lamela, BA**Tuesdays 11.00 am to 1.00 pm,
starting 20 January**Group 2** OLE0206**Carolina Montané Franco, BA, MA**Thursdays 6.00 pm to 8.00 pm,
starting 20 January

This course is designed for beginners. Whether you wish to learn the language for pleasure or work, this course will give you a sound knowledge of the basics of the language and culture so that you will be able to communicate simply and effectively in everyday situations. All language skills will be practised during the course with an emphasis on oral language. Materials will be provided in class and textbook will be discussed at the first class.

These classes will take place on QUB campus
No classes on Tuesday 17 March



Spanish Lower Intermediate

Fee £200.00 (concession rate £160.00)

Autumn 2025**20 weekly sessions****Group 1** **OLE0197****Silvia Lamela, BA****Wednesdays 1.00 am to 3.00 pm,
starting 24 September****Group 2** **OLE3407****Carolina Montané Franco, BA, MA****Mondays 6.00 pm to 8.00 pm,
starting 22 September**

This course is designed for students who have completed the 20 weeks beginners' course in the Open Learning Programme who have a good basic knowledge of the language. The course aims at improving oral and grammar competence and performance with some basic written work and will also present and discuss various aspects of life in the country. Materials provided. Textbook will be discussed at the first class.

These classes will take place on QUB campus

A Taste of Spain Intermediate**OLE0200****Carolina Montané Franco, BA, MA**

Fee £50.00 (concession rate £40.00)

Autumn 2025**5 weekly sessions on Wednesdays 6.00 pm
to 8.00 pm, starting 24 September**

This course is suitable for students with a lower intermediate level of Spanish (A2-B1) who want to practise the language through conversation. We will learn about the dishes to sample when travelling to Spain and some countries in South America along with the most representative places to visit and festivals of interest of the regions where those come from. Intermediate grammar structures and vocabulary will be reinforced throughout the course. Don't miss out this opportunity to practice and improve your Spanish through gastronomy! Warning: this course is to be taken on a full stomach... or not.

This class will take place on QUB campus



**Two ways to access the
Open Learning website.**

Either type in **www.qub.ac.uk/ol**
or scan the
QR code above.



Spanish: Intermediate**OLE0199****Silvia Lamela, BA****Fee** £200.00 (concession rate £160.00)**Autumn 2025****20 weekly sessions on Thursdays 1.00 pm to 3.00 pm, starting 25 September**

The objective of this highly participatory course is to improve your speaking ability and expand your knowledge of Spanish vocabulary and culture. Through dynamic conversation activities, students will gain confidence in speaking, acquire new vocabulary, and solidify their ability to use structures previously studied. Activities will include exploring different vocabulary themes including sharing personal stories, learning new expressions, and conversational practice in partners and as a group. Materials provided. Textbook will be discussed at the first class.

This class will take place on QUB campus

Spanish Upper Intermediate**OLE3436****Ann Buxade Del Tronco, BA, PGCE****Fee** £100.00 (concession rate £80.00)**Autumn 2025****10 weekly sessions on Wednesdays 11.00 am to 1.00 pm, starting 24 September**

With the foundations in place, this 10-week course aims to consolidate what you have covered so far and increase your confidence and fluency, enabling you to interact with native speakers in different situations. We will use a variety of methods, including listening, speaking, reading, writing and role play. You will expand your vocabulary and feel more confident to use your Spanish more widely. By the end of the course, you will be ready to take your studies as far as you would like and in whichever direction you choose.

This class will take place on QUB campus

Early Bird ...

We make the decision on whether or not to run a course seven days before the course start date, based on whether we have reached the minimum number of enrolments.

So please help us to help you!

Enrolments will close one week before classes are due to start.

Be an early bird and enrol well in advance!



‘Very well organised and informative. Developed in a manner that was encouraging and promoted interaction.’

Spanish: Beginners’ –
Silvia Lamela

Be an early bird and enrol well in advance



Spanish Upper Intermediate Conversation**OLE0975****Sol Martin, BA****Fee** £200.00 (concession rate £160.00)**Autumn 2025**

20 weekly sessions on Wednesdays 6.00 pm to 8.00 pm, starting 24 September (22 October, 26 November, 18 February, 25 March will be at QUB campus, the remainder online)

Don't let the dark long evenings prevent you from practising and enjoying your Spanish once a week!

This course is for students who have completed Intermediate Level in the Open Learning Programme and anyone with a good knowledge of the language. We'll try to strike a balance between a revision of basic grammar and introducing and practising new topics (past tenses, the present subjunctive and the imperfect subjunctive) There will also be plenty of opportunity for discussion, putting your grammar to use while tapping into each of the four skills: listening, speaking, reading and writing.

Spanish: Grammar Clinic**OLE3433****Sol Martin, BA****Fee** £100.00 (concession rate £80.00)**Autumn 2025**

10 weekly sessions on Wednesdays 2.00 pm to 4.00 pm, starting 24 September

A 10-week course, to tackle the usual suspects: Por or para, ser or estar, indicativo or subjuntivo, pasado simple or imperfecto? Whether you are at a basic level, or you have been learning Spanish for a long time and want to brush up on these often confusing topics, come along and join us. We'll work together for an intense analysis of their differences and the opportunity to put these tricky pairs into practice. Lessons will take place in a relaxed atmosphere that will encourage conversation through communicative activities as well as in-depth grammar work. Required basic level: Pre-Intermediate/A2

This class will take place on QUB campus

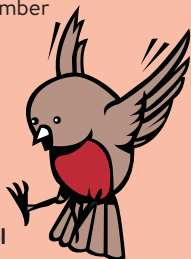
Early Bird ...

We make the decision on whether or not to run a course seven days before the course start date, based on whether we have reached the minimum number of enrolments.

So please help us to help you!

Enrolments will close one week before classes are due to start.

Be an early bird and enrol well in advance!



A Brief History of the Law: The Interesting Bits

Laura Hill, LLB

Fee £100.00 (concession rate £80.00)

10 weekly sessions

Autumn 2025

Group 1 **OLE1650**

**Mondays 7.00 pm to 9.00 pm,
starting 22 September**

New Year 2026

Group 2 **OLE2317**

**Mondays 7.00 pm to 9.00 pm,
starting 19 January**

Don't know your Magna Carta from your Habeas Corpus? Are you interested in the law, legal history, their effects on our lives and our language? We will consider how law has developed from Roman and Medieval times to how our legal system is now structured. We will also look at the basic principles of criminal and civil law and briefly at 'Brexit'.

These classes will take place on QUB campus

Contemporary American Literature

OLE3362

Linda McKeown, BA, MA, PhD

Fee £100.00 (concession rate £80.00)

Autumn 2025

10 weekly sessions on Tuesdays 2.00 pm to 4.00 pm, starting 23 September

This course will examine a selection of contemporary American novels as suggested by previous students. Texts will include *Dream Count* by Chimamanda Ngozie Adichie, *Plainsong* by Kent Haruf, *Ragtime* by E.L. Doctorow, *One Thousand Acres* by Jane Smiley and *The Underground Railroad* by Coulson Whitehead.

This class will take place on QUB campus



Two ways to access the
Open Learning website.
Either type in www.qub.ac.uk/ol
or scan the
QR code above.



Donne and Herbert - Poet Priests**OLE3416****Maureen Boyle, MA****Fee** £100.00 (concession rate £80.00)**Autumn 2025****10 weekly sessions on Thursdays 11.00 am to 1.00 pm, starting 25 September**

Using the biographies, *Super-Infinite*, by Katherine Rundell and *Music at Midnight*, by John Drury, we will explore the poetry of John Donne and George Herbert in the context of metaphysical poetry, their personal lives and the English Reformation.

This class will take place on QUB campus

Forrest Reid: The Proust of Ormiston Crescent**OLE3078****Michael Kelly, BA, MA****Fee** £100.00 (concession rate £80.00)**Autumn 2025****10 weekly sessions on Tuesdays 6.00 pm to 8.00 pm, starting 23 September**

This year marks 150th anniversary of the birth of the Belfast born writer Forrest Reid. Once with an international reputation, he is today all but forgotten. This course examines Reid's life and works through his exploration of the worlds of childhood and the supernatural. We shall study his novel *Uncle Stephen* (on which close friend Walter de la Mare was a consultant), thereby gaining an appreciation of the author's achievements.

This Class will take place on QUB campus



Two ways to access the
Open Learning website.

Either type in www.qub.ac.uk/ol
or scan the
QR code above.



Inside the Walls: Big House Literature

OLE3363

Eamonn Hughes, PhD

Tess Maginess, BA, MA, PhD, PFHEA

Fee £50.00 (concession rate £40.00)

Autumn 2025

5 weekly sessions on Wednesdays 4.00 pm to 6.00 pm, starting 24 September

24 September	Maria Edgeworth, <i>Castle Rackrent</i>	Eamonn Hughes
1 October	Samuel Beckett, <i>Endgame</i>	Eamonn Hughes
8 October	Kate O'Brien, <i>The Land of Spices</i>	Eamonn Hughes
15 October	Cauvery Madhaven, <i>The Tainted</i>	Tess Maginess
22 October	Michael McLaverty, 'The Game Cock' Available at: https://zoboko.com/text/row32j1m/collected-short-stories-classic-irish-short-stories-by-michael-mclaverty-one-of-irelands-finest-short-story-writers-introduction-by-seamus-heaney/13	Tess Maginess

This class will take place on QUB campus

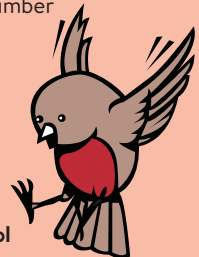
Early Bird . . .

We make the decision on whether or not to run a course seven days before the course start date, based on whether we have reached the minimum number of enrolments.

So please help us to help you!

Enrolments will close one week before classes are due to start.

Be an early bird and enrol well in advance!



Be an early bird and enrol well in advance



The Blackbird Bookclub, Part 1

OLE1214

Tess Maginess, BA, MA, PhD, PFHEA and panel

Fee £100.00 (concession rate £80.00)



Autumn 2025

10 weekly sessions on Mondays 11.00 am to 1.00 pm, starting 22 September

The Blackbird Bookclub celebrates the best of classical and contemporary writing and features guest talks from leading Irish writers. The Bookclub is an informal class where participation from students is welcomed. Students are also invited to contribute their ideas about the works to be discussed. The course is led by Tess Maginess.

22 September	Colm McCann, <i>Twist</i>	Tess Maginess
29 September	Belinda McKeon: 'Long Distance' (<i>in The Long Gaze Back ed. Sinead Gleeson</i>)	Louise McIvor
6 October	Scott McKendry, <i>GUB</i>	Scott McKendry
13 October	Barbara Kingsolver, <i>The Bean Trees</i>	Linda McKeown
20 October	Eoin McNamee, <i>The Bureau</i>	Eoin McNamee
27 October	Raymond Carver, 'Cathedral'	Tess Maginess
3 November	Euripides Alcestis: <i>The Perfect Wife</i>	Geraldine O'Neill
10 November	Jane Austen, <i>Pride and Prejudice</i>	Tess Maginess
17 November	Muriel Spark, <i>Girls of Slender Means</i> And GM Hopkins 'Wreck of the Deutschland' (Text will be on PP)	Martin Tyrrell
24 November	Open session	Tess Maginess

Dates and speakers correct at time of going to press.

This class will take place on QUB campus



The Blackbird Bookclub, Part 2

OLE1215

Tess Maginess, BA, MA, PhD and panel

Fee £100.00 (concession rate £80.00)



New Year 2026

10 weekly sessions on Mondays 11.00 am to 1.00 pm, starting 19 January

The Blackbird meets again in the New Year. New participants welcome.

19 January	Edna O'Brien, <i>The Country Girls</i>	Eamonn Hughes
26 January	Poetry- winter poems	Tess Maginess
2 February	Chimamanda Ngozie Adichie, <i>Dream Count</i>	Linda McKeown
9 February	Sarah Winman: <i>Still Life</i>	Louise McIvor
16 February	Joseph O'Connor, <i>In my Father's House</i>	Tess Maginess
23 February	Sebastian Faulks, <i>Snow Country</i>	Alison MacKenzie
2 March	<i>Euripides' Medea: the Not-So-Perfect wife</i>	Geraldine O'Neill
9 March	Mairin Mitchell, <i>Storm Over Spain</i> (PDF will be available)	Martin Tyrrell
16 March	John Kelly, <i>About Blood</i> (reading)	John Kelly
23 March	Orla Mackey, <i>Mouthing</i>	Tess Maginess

Dates and speakers correct at time of going to press.

This class will take place on QUB campus

The Golden Age of Russian Literature

OLE3432

Angela Hunt, BA, MA, MIR, MCIL

Fee £100.00 (concession rate £80.00)

New Year 2026

10 weekly sessions on Wednesdays 6.00 pm to 8.00 pm, starting 21 January

This course provides an in-depth exploration of several key-themes in Russian Literature, focusing on the works of the major 19th century writers such as Pushkin, Tolstoy, Dostoyevsky, Turgenev. Throughout the course participants will engage with the socio-political and cultural trends that influenced Russian literature in the 19th century and its impact on modern day.

This class will take place on QUB campus

Be an early bird and enrol well in advance



World Literature: Global Voices

OLE2328

Tess Maginess, BA, MA, PhD, PFHEA + panel of experts

Fee £150.00 (concession rate £120.00)

Autumn 2025

20 weekly sessions on Wednesdays 2.00 pm to 3.30 pm, starting 24 September

In this 20-week course, a panel of experts will join Tess Maginess to celebrate and discuss the poems, plays and stories from across the world and from across history. There will be a lively mix of classic texts and more contemporary literature.

24 September	Jane Austen, <i>Persuasion</i>	Tess Maginess
1 October	Vergil's Aeneid, Book 1 'When Aeneas met Dido'	Geraldine O'Neill
8 October	John Donne 'At the Round Earth's Imagined Corners'	Tess Maginess
15 October	Alba de Céspedes, <i>The Forbidden Notebook</i>	Eamonn Hughes
22 October	Carol Shields, <i>The Stone Diaries</i>	Linda McKeown
29 October	John Hewitt-Queen's University public lecture	TBC
5 November	Nella Larsen, <i>Passing</i>	Cathal McManus
12 November	JD Salinger, <i>Catcher in the Rye</i>	Martin Tyrrell
19 November	The Book of Ruth: Wee Story, Big Story	Desi Maxwell, James McKeown and Tess Maginess
26 November	Ciaran Carson, <i>Still Life</i>	Eamonn Hughes
21 January	G B Shaw, <i>Mrs Warren's Profession</i>	Seamus McKee
28 January	Lucia Berlin, <i>A Manual for Cleaning Women</i>	Tess Maginess
4 February	W B Yeats, 'The Dreaming of the Bones' (Will be available in PDF)	Eamonn Hughes
11 February	Abdulrazak Gurnah, <i>Paradise</i>	Tess Maginess
18 February	Aeneid, Book 2 'The Fall of Troy'	Geraldine O'Neill
25 February	Malcom Bradbury, <i>The History Man</i>	Martin Tyrrell
4 March	Madeleine Thien, <i>The Book of Records</i>	Tess Maginess
11 March	Kent Haruf, <i>Plainsong</i>	Linda McKeown
18 March	Andreï Makine, <i>A Life's Music</i>	Alison MacKenzie
25 March	William Shakespeare, <i>King Lear</i>	Tess Maginess

Dates and speakers correct at time of going to press.

This class will take place on QUB campus



Writing Women: A Journey through Contemporary Women's Fiction: Part 1

OLE2919

Louise Mclvor, BA, FHEA

Fee £100.00 (concession rate £80.00)

Autumn 2025

10 weekly sessions on Tuesdays 11.00 am to 1.00 pm, starting 23 September

This course will discuss and explore the work of popular contemporary women writers. The texts we are hoping to cover will include: Jan Carson: *Quickly, While they Still Have Horses* (short stories), Willa Cather: *My Antonia*, Margaret Drabble: *A Day in the Life of a Smiling Woman* (short stories), Annie Garthwaite: *The King's Mother*, Kate Mosse: *The Winter Ghosts*.

This class will take place on QUB campus

Writing Women: A Journey through Contemporary Women's Fiction: Part 2

OLE2047

Louise Mclvor, BA, FHEA

Fee £100.00 (concession rate £80.00)

New Year 2026

10 weekly sessions on Tuesdays 11.00 am to 1.00 pm, starting 20 January

This course will discuss and explore the work of popular contemporary women writers. The texts we are hoping to cover will include: Yan Ge: *Elsewhere* (short stories), Tayari Jones: *Silver Sparrow*, Caroline Lea: *The Metal Heart*, Ruth Ware: *One Perfect Couple*, Sarah Winman: *Still Life*, Evie Woods: *The Lost Bookshop*.

This class will take place on QUB campus
No class on Tuesday 17 March



Two ways to access the Open Learning website.

Either type in www.qub.ac.uk/ol
or scan the
QR code above.

***'A very enjoyable class;
educational, full of information,
explanation of the female
writers very well detailed.'***

Writing Women: A Journey
Through Contemporary Women's
Fiction – Louise Mclvor



Playing Shakespeare: *Troilus and Cressida***OLE2118****Rosie Pelan, BA, MA, PGCE, DDA****Fee** £100.00 (concession rate £80.00)**Autumn 2025****10 weekly sessions on Mondays 7.30 pm to 9.30 pm, starting 22 September**

New and returning members are very welcome to this accessible, practical course. You will explore, analyse and workshop scenes and speeches from Shakespeare's *Troilus and Cressida*. Students will explore Shakespeare from the actor's perspective and understand how language structures in the play help to inform meaning and shape character. The tutor is a classically trained actor who has performed several Shakespearean roles in her professional career. She was the NI judge in the UK-wide joint BBC/RSC 'Shakespeare Off by Heart' competition and taught Shakespeare on the QUB Drama degree course for ten years. Come, perform, enjoy!

Textbook: *Troilus and Cressida* by William Shakespeare (Penguin edition or any edition)

This class will take place on QUB campus

Playing Shakespeare: *Merchant of Venice***OLE0884****Rosie Pelan, BA, MA, PGCE, DDA****Fee** £100.00 (concession rate £80.00)**New Year 2026****10 weekly sessions on Mondays 7.30 pm to 9.30 pm, starting 19 January**

New and returning students are very welcome to this accessible, relaxed course. During the course you will develop the vocal and script analysis skills necessary to understanding and performing a Shakespearean text. You will enhance your understanding of verse and prose forms and gain confidence in approaching Shakespeare from the actor's perspective. Rosie is a classically trained actor and taught on the QUB Drama degree for ten years. Come, perform, enjoy!

Textbook: *The Merchant of Venice* by William Shakespeare (Penguin edition or any edition)

This class will take place on QUB campus

Early Bird ...

We make the decision on whether or not to run a course seven days before the course start date, based on whether we have reached the minimum number of enrolments.

So please help us to help you!

Enrolments will close one week before classes are due to start.

Be an early bird and enrol well in advance!



Mornings with Papa Haydn**OLE3419****Alec Macdonald, BMus****Fee** £50.00 (concession rate £40.00)**Autumn 2025****10 weekly sessions on Fridays 11.00 am to 12.00 noon, starting 26 September**

Come and spend an hour each Friday morning as we explore the life and music of Franz Joseph Haydn (1732-1809), 'Papa' as he was affectionately known. His long musical career began as a choirboy at St. Stephen's Cathedral in Vienna and continued as he learnt his trade in the employment of Count Morzin. His thirty years with Prince Esterhazy in the wilds of Hungary saw his genius fully revealed in every genre from operas and symphonies to trios for the baryton, the prince's favourite instrument. We will hear about his great friendship with Mozart and his largely unsuccessful attempts to teach Beethoven, his triumphant years in London and his final majestic choral works, before his death in Vienna during the French bombardment of the city.

This class will take place on QUB campus

Camille Saint-Saens, The Man who Composed 'The Carnival of the Animals'**OLE3420****Alec Macdonald, BMus****Fee** £50.00 (concession rate £40.00)**New Year 2026****10 weekly sessions on Fridays 11.00 am to 12.00 noon, starting 23 January**

...and much more besides, from short piano pieces to operas (thirteen in total), symphonies (five) and concertos (ten). Born in 1835, when Mendelssohn and Schumann were still alive, he showed talent from a very young age. The critic Harold Schoenberg said that he was 'the most remarkable child prodigy in history, and that includes Mozart'. Indeed, he began giving piano recitals when he was just five years old! Yet he lived long enough (he died in 1921) to compose the first ever score for a film, in 1908. In this course we will be listening to a wide selection of his music, from familiar works such as the third symphony, the second piano concerto and Danse Macabre, to less well-known, but equally attractive pieces.

This class will take place on QUB campus



**Two ways to access the
Open Learning website.**

Either type in **www.qub.ac.uk/ol**
or scan the
QR code above.



Basic Psychology: Theory, Research and Application**OLE2997****Kenneth Johnston, BSc, MSc****Fee** £100.00 (concession rate £80.00)**Autumn 2025****10 weekly sessions on Tuesdays 7.00 pm to 9.00 pm, starting 23 September**

This course will consider theories and research in different areas of psychology and how these are relevant to applied contexts. We will examine personality testing and how this is used in recruitment. Related to this is the issue of intelligence. What is the role of ability testing in selecting the right candidates for a job. We will also look at the role of psychology in promoting healthy behaviours such as taking up exercise and stopping smoking. We will also examine issues in sport and advertising. How can athletes improve their concentration and teamwork and how do advertisers persuade customers to buy their products?

This class will take place on QUB campus

Compassionate Listening**OLE3438****Ciara O'Neill, BA****Fee** £50.00 (concession rate £40.00)**Autumn 2025****5 weekly sessions on Fridays 2.00 pm to 4.00 pm, starting 26 September**

Holding space and listening with kindness and compassion is one of the greatest gifts we can offer to others and to ourselves. To listen with openness, curiosity and acceptance allows others to feel truly heard, felt and seen. In this short course we will learn valuable listening skills which we can use in our everyday lives to enrich our relationship and connection with ourselves and others. Drawing on the work of Gene Gendlin, Carl Rodgers and Ron Kurtz we will practise listening in dyads and small groups to each other. It is hoped in doing so we will discover the enlivening and transforming quality of being present to another and them to us. Participants will be given the opportunity to be paired together to practise compassionate listening between classes.

This class will take place on QUB campus



Creative Thinking Skills**OLE3382****David Tierney, BA, MA****Fee** £50.00 (concession rate £40.00)**New Year 2026****One-day workshop on Saturday 21 February,
10.00 am to 4.00 pm**

Developing creative thinking skills could be seen as essential for both personal and professional growth. On this course we explore the methods you use when trying to solve a problem, think differently, explore things from a unique perspective or want to generate innovative ideas. We discuss the themes of open mindfulness, curiosity, lateral thinking, experimentation, problem solving and analysis, innovation, and collaboration. Through a series of powerful exercises, inspired by the most creative thinkers today, you will learn to transform your creative thinking skills and increase the quality and quantity of ideas you generate daily and over time.

This class will take place on QUB campus

Early Bird ...

We make the decision on whether or not to run a course seven days before the course start date, based on whether we have reached the minimum number of enrolments.

So please help us to help you! Be an early bird and enrol well in advance.

**Be an early bird and
enrol well in advance!**

**Daoyin: Chinese Health Exercises****John McKeever, MA****Fee** £50.00 (concession rate £40.00)**10 weekly sessions****Autumn 2025****Group 1** **OLE3287****Mondays 6.00 pm to 7.00 pm,
starting 22 September****New Year 2026****Group 2** **OLE3288****Mondays 6.00 pm to 7.00 pm,
starting 19 January**

Daoyin are ancient Oriental healing exercises. By using a variety of techniques and methods to open up the body's energy pathways Daoyin seeks to lead the body/mind to self-healing and health. In these classes we will use stretching, movement, self-Shiatsu, tapping and meditation to encourage greater flow and relaxation thereby creating a feeling of health and well-being. Please bring a mat or blanket for working on the floor. If you have a health issue which you feel might prevent you from doing the classes please do contact the tutor via email - shiatsuhealthbelfast@yahoo.co.uk

These classes will take place on QUB campus

Be an early bird and enrol well in advance



Developing Resilience through The Arts**OLE3441****Ciara O'Neill, BA****Fee** £50.00 (concession rate £40.00)**New Year 2026****5 weekly sessions on Saturdays 10.00 am to 12.00 noon, starting 24 January**

"If only the best birds sang the woods would be silent" Pablo Picasso famously once said "Every child is an artist. The problem is how to remain an artist once he grows up." In this course we will begin a gentle process of reclaiming the singer, the dancer, the actor, the dreamer within us, stirring our imagination and finding new, playful and joy filled ways to be in the world. Each week we will try out different creative skills and notice where they might allow us to expand our possibilities for expression and fun in daily life within a supportive, encouraging and compassionate environment.

This class will take place on QUB campus

Developmental Psychology: From Infancy to Adolescence**OLE3209****Kenneth Johnston, BSc, MSc****Fee** £100.00 (concession rate £80.00)**New Year 2026****10 weekly sessions on Tuesdays 7.00 pm to 9.00 pm, starting 20 January**

This course will examine various topics in developmental psychology. We will look at how children's perception, thinking and behaviour changes as they mature. Topics covered will include intelligence/cognition, language and moral thinking. We will also consider developmental disorders such as autism and dyslexia. What are the causes and characteristics of these conditions and what interventions are available? Finally, we will look at the issue of bullying - a serious issue for certain children at school. What are its causes and what can be done to prevent it?

This class will take place on QUB campus
No class on Tuesday 17 March



**Two ways to access the
Open Learning website.**

Either type in **www.qub.ac.uk/ol**
or scan the
QR code above.



Making Sense of Healthy Eating: A New Paradigm

Janice McConnell, PhD

Fee £50.00 concession rate £40.00)

One-day workshop

Autumn 2025

Group 1 **OLE3435**

Saturday 1 November, 10.00 am to 4.00 pm

New Year 2026

Group 2 **OLE3294**

Saturday 24 January, 10.00 am to 4.00 pm

In the current climate where there is so much confusion around the concept of healthy eating, this workshop cuts through the complexity to bring a clear understanding of healthy eating in practice, and the evidence supporting it. Content includes: Why healthy eating is important, current dietary trends, health and healthy eating, diet timeline, world's healthiest diets, evidence for new paradigm, healthy eating in practice.

These classes will take place on QUB campus

Manifesting: Science or Wishful Thinking?

OLE3450

David Tierney, BA, MA

Fee £50.00 (concession rate £40.00)

New Year 2026

One-day workshop on Saturday 14 March, 10.00 am to 4.00 pm

Manifesting is the practice of bringing your desires, goals, or intentions into reality by focusing your thoughts, beliefs, and actions on them. This one-day course examines the interplay between psychology, neuroscience and belief systems to evaluate the practical use of manifesting and the differences it can make to your own life. We discuss the key principles of manifesting and the research behind them to help you decide if this is a skill to develop and hone which is backed by science or another form of wishful thinking with limited use.

This class will take place on QUB campus

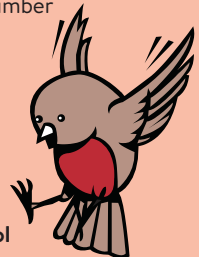
Early Bird . . .

We make the decision on whether or not to run a course seven days before the course start date, based on whether we have reached the minimum number of enrolments.

So please help us to help you!

Enrolments will close one week before classes are due to start.

Be an early bird and enrol well in advance!



Mindfulness-Based Stress Reduction**Frank Liddy, CSCT Adv Dip Counselling****Fee** £50.00 (concession rate £40.00)**5 weekly sessions****Autumn 2025****Group 1** **OLE0141****Thursdays 7.00 pm to 9.00 pm,
starting 25 September****New Year 2026****Group 2** **OLE1713****Thursdays 7.00 pm to 9.00 pm,
starting 22 January**

This is a 5-week educational course to teach participants Mindfulness-Based Stress Reduction. The course has been developed using the model of Jon Kabat-Zinn, PhD, of the University of Massachusetts. It has been known for centuries in the meditative tradition that the sustained practice of mindfulness meditation can have profoundly healing and transformative effects in one's life. Mindfulness is an awareness that arises as one pays attention on purpose in a particular way to ongoing inner and outer, present-moment experience.

These classes will take place on QUB campus

Understanding the Stockmarket: An Introduction**OLE0216****Patrick Mahony, BA, PGCE, MBA, MCIM, FSI****Fee** £50.00 (concession rate £40.00)**New Year 2026****5 weekly sessions on Wednesdays 6.00 pm
to 8.00 pm starting 28 January**

This is a course for those who have made or are interested in making Stockmarket investments but have limited knowledge of how the Stockmarket works. It is a practical course. It looks at the structure of the London Stock Market and how shares are priced. Students will enhance their knowledge of gilts, corporate loan notes, collective investments such as unit trusts and capital investment bonds and shares. Time is spent on understanding how to read *The Financial Times*.

This class will take place on QUB campus

***'Really enjoyed this course-
tutor broke down the difficult
concepts and made it very
understandable.'***

Understanding the Stockmarket:
An Introduction – Patrick Mahony



Our Place in the Universe

OLE0838

Colin Johnston, BSc

Fee £100.00 (concession rate £80.00)

Autumn 2025

10 weekly sessions on Wednesdays 7.00 pm to 9.00 pm, starting 24 September

Explore astronomy from ancient beliefs to today's latest exoplanet discoveries, space missions and Big Bang theory! This course will both explain our scientific knowledge of the Universe and describe the wonder and beauty beyond our planet. The class will learn to recognise the stars, constellations and planets we can see from our towns and countryside before moving outward through the Solar System to discover our neighbours in space. By the end of the course the class will have investigated pulsars, black holes, galaxies and even considered if there is life on other worlds. These classes are for anyone wanting a start in astronomy and the space sciences- no prior science or maths experience needed- and are delivered in a relaxed and informal atmosphere.

This class will take place on QUB campus

Caravaggio: Brushes with the Law

OLE3425

Matthew Barr, PhD

Fee £100.00 (concession rate £80.00)

Autumn 2025

10 weekly sessions on Mondays 7.00 pm to 9.00 pm, starting 22 September

This course looks at the turbulent life of the great Italian painter Caravaggio. Carrying a chip on his shoulder from his humble Milanese origins, his supreme talents quickly brought him notoriety and prestigious commissions in Rome. But these talents and his hot temper brought him enemies just as quickly. Trouble followed Caravaggio culminating in his being charged with murder and consequently fleeing to Malta. We will consider the huge impact this artist had with his bold and unique style alongside his fascinating biography, full of violence and action at the same time as he was revolutionising painting everywhere he went right up to his dramatic and premature death.

This is a live online course

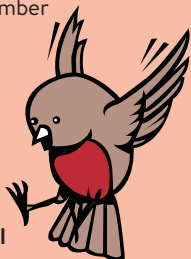
Early Bird ...

We make the decision on whether or not to run a course seven days before the course start date, based on whether we have reached the minimum number of enrolments.

So please help us to help you!

Enrolments will close one week before classes are due to start.

Be an early bird and enrol well in advance!



Be an early bird and enrol well in advance



Leonardo da Vinci: Renaissance Man**OLE3424****Matthew Barr, PhD****Fee** £100.00 (concession rate £80.00)**New Year 2026****10 weekly sessions on Mondays 7.00 pm to 9.00 pm, starting 19 January**

Leonardo has achieved a position of almost unique fame in Western art, known as a polymath with interests far beyond painting, including engineering, architecture, physiognomy, and more. We will examine his career in detail, setting famous masterpieces such as the 'Mona Lisa' and 'The Virgin of the Rocks' in their historical context and considering the circumstances of their production. We will use Leonardo's wonderful drawings to help understand the Renaissance mind in a fascinating period when boundaries between disciplines hardly existed.

This is a live online course



**Two ways to access the
Open Learning website.**

Either type in **www.qub.ac.uk/ol**
or scan the
QR code above.

Hollywood

(Secretary: Mrs Sally Stevenson and Mr Ian Montgomery, c/o Open Learning Office)

Israel/Palestine and The Middle East**OLE3356****Gerry Cleary, PhD****Fee** £75.00 (concession rate £60.00)**Autumn 2025**

10 weekly sessions on Tuesdays 10.45 am to 12.15 pm, starting 23 September in Room 4, Hollywood Library, High Street, Hollywood

The current conflict in Israel/Palestine has deep tangled roots and the prospect of a lasting just peace remains elusive. The course will examine the origins and underlying causes behind the dreadful events in the Middle East in recent years. The Middle East has played a critical role in the development of our Western civilisation past and present. The three main monotheistic religions - Judaism, Christianity and Islam all have their origins there - and yet, the region has been a cockpit of conflict for over 3,000 years right up to the present day. The course will attempt to explain this dichotomy and to offer some hope for the future (????) The tutor will draw on his personal experiences of the region to try to explain and illustrate the true nature of its problems.



Hollywood

(Secretary: Mrs Sally Stevenson and Mr Ian Montgomery, c/o Open Learning Office)

Big House Wee House in Irish Literature**OLE3254****Tess Maginess, BA, MA, PhD****Eamonn Hughes, PhD****Fee** £75.00 (concession rate £60.00)**New Year 2026****10 weekly sessions on Tuesdays 10.45 am to 12.15 pm, starting 20 January in Room 4, Hollywood Library, High Street, Hollywood****Big House, Wee House**

20 January	Maria Edgeworth, <i>Castle Rackrent</i>	Eamonn Hughes
27 January	Jan Sheridan LeFanu, <i>Carmilla</i>	Eamonn Hughes
3 February	Samuel Beckett, <i>Endgame</i>	Eamonn Hughes
10 February	Kate O'Brien, <i>Land of Spices</i>	Tess Maginess
17 February	Cauvery Madhavan, <i>The Tainted</i>	Tess Maginess

Wee House in Irish Literature

24 February	William Carleton, 'The Native Doric' (<i>Text will be made available</i>)	Tess Maginess
3 March	William Butler Yeats and Augusta Gregory, <i>Cathleen ni Houlihan</i> (PDF available)	Eamonn Hughes
10 March	James Joyce, 'Eveline' (in <i>Dubliners</i>)	Eamonn Hughes
24 March	Eavan Boland, From 'Anna Liffey' (text will be made available on PP)	Tess Maginess
31 March	Wendy Erskine, 'Inakeen' (<i>in Sweet Home</i>)	Tess Maginess

No class on Tuesday 17 March



One-Day courses/Half-Day courses

Friday 3 October

Starting to Write, Group 1

For further details, see page 12

Saturday 4 October

How to Write for Profit and Pleasure, Group

For further details, see page 12

Saturday 8 October

Builders of Central Belfast (2): A Walking Tour

For further details, see page 28

Saturday 11 October

Builders of West Belfast, Part 1

For further details, see page 29

Saturday 11 October

Understanding Refugee and Asylum Systems -
a Beginner's Workshop, Group 1

For further details, see page 20

Saturday 25 October

Boost Your Reading Brain

For further details, see page 17

Saturday 25 October

Builders of Central Belfast (1): A Walking Tour

For further details, see page 28

Saturday 1 November

Making Sense of Healthy Eating: A New
Paradigm, Group 1

For further details, see page 69

Saturday 8 November

Understanding UK Asylum systems: An
Advanced Workshop, Group 1

For further details, see page 20

Saturday 15 November

Love in the Time of Jane Austen

For further details, see page 32

Saturday 22 November

Beat the Blank Page

For further details, see page 11

Friday 23 January

Starting to Write, Group 2

For further details, see page 12

Saturday 24 January

How to Write for Profit and Pleasure, Group 2

For further details, see page 12

Saturday 24 January

Making Sense of Healthy Eating: A New
Paradigm

For further details, see page 69

Saturday 31 January

Call the Midwife! A Brief History of Pregnancy
and Childbirth

For further details, see page 29

Friday 21 February

Creative Thinking Skills

For further details, see page 67

Saturday 21 February

Rewilding: Breathing New Life into
Conservation

For further details, see page 23

Saturday 7 March

Understanding Refugee and Asylum Matters:
A Beginner's Workshop, Group 2

For further details, see page 20

Saturday 14 March

Manifesting-Science or Wishful Thinking?

For further details, see page 69

Saturday 21 March

Advanced Irish Conversation

For further details, see page 49

Saturday 21 March

Understanding UK Asylum systems: An
Advanced Workshop, Group 2

For further details, see page 20



Notes

This image shows a single sheet of white paper with horizontal ruling lines. The lines are evenly spaced and run across the width of the page. There are no margins, text, or other markings on the paper.

